

ECONOMIC DEVELOPMENT AND RESEARCH CENTER



# POOR FAMILIES AND SOCIAL SERVICES IN ARMENIA

HOUSEHOLD SURVEY REPORT  
YEREVAN 2006

## Poor Families and Social Services in Armenia, EDRC 2006

info@edrc.am, www.edrc.am

### Key Research Team:

Mushegh Tumasyan, Research Director,

Gagik Torosyan, PhD in Economics, Coordinator,

Gennadiy Terzikyan, Doctor of Mathematics, Mathematical Statistician,

Yelena Manukyan, PhD in Economics, Statistical Analyst,

Varsenik Mnatsakanyan, Research Assistant.

# Table of Contents

Introduction .....	4
<b>A. Research Design and Implementation .....</b>	<b>5</b>
Objectives .....	5
Stratification of the General Population.....	5
Sampling .....	6
The Questionnaire.....	7
Survey Management and Supervision .....	7
Refusals or Failed Interviews .....	8
Quality of Results and Comparison.....	8
<b>B. Main Findings .....</b>	<b>9</b>
Size and Composition of Households in Armenia .....	9
Perception of Poverty and Needs .....	12
Social Services and Transfers .....	14
Family Benefit System .....	16
<b>Annex 1. Statistical Data of the General Survey .....</b>	<b>18</b>
Section A. General Demographic Picture .....	19
Section B. Education and Employment.....	21
Section C. Healthcare .....	23
Section D. Housing conditions and communal services .....	23
Section E. Family Benefit System .....	25
Section F. Agriculture.....	27
<b>Annex 2. Statistical Data on Beneficiary Families .....</b>	<b>29</b>
Section A. Main Demographic Picture .....	30
Section B. Education and Employment.....	32
Section C. Healthcare .....	34
Section D. Housing conditions and communal services .....	35
Section E. Family Benefit System .....	36
Section F. Agriculture.....	37

# Introduction

The Economic Development and Research Center (EDRC) is a non-profit and politically unaffiliated, independent research institution<sup>1</sup>. EDRC has gained extensive experience and research capacities during the past 6 years and specializes in conducting quantitative research and statistical surveys. In 2006, EDRC conducted the “Household Survey Project” for the Ministry of Labor and Social Issues within the framework of the “Social Protection Administration Project” of the World Bank. The goal of the project was to assist the efforts to increase the efficiency, better target and increase access to social assistance in Armenia, namely the Family Benefit System. The objectives were set to assess the needs of households and social services, define priorities thereof, develop alternatives for social assistance and adjust the “family poverty scoring formula”.

As a result of the project implementation:

- A statistical sample survey of households in Armenia was carried out and a database of 3800 households was constructed,
- A statistical sample survey of households involved in Family Benefit System in Armenia was carried out and a database of 700 beneficiary households was constructed,
- A policy recommendations paper was prepared and presented – “Improvement of Social Assistance Targeting in Armenia”,
- The present analytical, statistical report on survey results was prepared – “Poor Families and Social Services in Armenia”.

As a whole, the findings will be very useful for similar studies and for developing policy recommendations. This can be supported by the quality and reliability of the survey data and outputs. The developed databases contain numerous socio-demographic and economic data on households that can be still used in multi-dimensional analyses.

The policy recommendations paper, developed under the Project (that is an integral part of the Project Final Report) was submitted to the Ministry of Labor and Social Issues together with the present Report. That paper contains clear and specific evaluation of the efficiency of current social services, in particularly Family Benefits, and recommendations for the improvement thereof.

The present Report on Poor Families and Social Services in Armenia aims at presenting the methodology used for conducting the survey, as well as main results and findings. Statistical Annexes are attached to the report in order to make available the collected information for further analysis. Furthermore, the Questionnaire of the survey and the Final databases (in SPSS format) are attached to the present on a CD-Rom.

---

<sup>1</sup> For details about the Economic Development and Research Center, please visit [www.edrc.am](http://www.edrc.am)

# A. Research Design and Implementation

## Objectives

Household surveys are important tools for the assessment of poverty and socio-economic situation in the country. These can serve basis for policy assessments and for development of policy recommendations. In 1996, National Statistical Service of Armenia conducted first integrated household survey on poverty and living standards. Since then the NSS has carried out 6 surveys (on poverty and living standards) which, year after year, were improved with the support of international experts to gradually reach the level of practices in developed countries.

Nevertheless, each survey is carried out to for specific objectives and goals; therefore achievement of each objective requires surveys aimed at obtaining specific data. On the other hand, high-quality surveys implemented by specialized institutions provides variety of information about a country and options that will support the in-depth assessment of the situation from different perspectives, thus, assisting the improvement of policies.

The Economic Development and Research Center has carried out a sample survey of households in Armenia. The objective of the survey was to obtain data on all households in Armenia, as well as to picture the social, demographic and economic situation of those households that were receiving public social assistance. Analyses of the collected data were necessary to a) assess the actual needs of beneficiaries, b) verify if current social services do meet those needs, c) assess if the system is well-targeted and efficient and d) obtain information and assess options for the improvement of the efficiency of current social services. In order to achieve the stated objectives it is necessary to study the households that receive social services (Beneficiaries), obtain data on what part of them are real beneficiaries, what are their needs, to what degree the social services meet the needs of their beneficiaries. On the other hand, it was necessary to assess to what extent the households in need are covered by social programs or, in other words, what share of potential beneficiaries are not covered by social programs.

Therefore, coming from the objectives of the survey, it was divided into two separate parts: the first part covers the sample of all households in Armenia (hereinafter – General Survey), whereas the second covers the sample of those households that are beneficiaries of the main public social program of Armenia – Family Benefit System (hereinafter – Targeted Survey). The sample of the General Survey includes 3 800 households which is equivalent to 4.9‰ of the General Population of households in Armenia. This sample size ensures the expected standard error to be 0.6% for data on beneficiaries and for data on all household – 0.81%. The sample size for the Targeted Survey was determined to be 700 which is equivalent to 5.4 ‰ of its General Population.

## Stratification of the General Population

The stratification of the General Population is very important to ensure the representativeness of the survey and to obtain high quality results. The General Population for the General Survey is the all households of Armenia, whereas for the Targeted Survey – the households that receive Family Benefits.

For the stratification of the General Population we used some specifics of the communities of Armenia that, we assume, have strong influence on the living standards and socio-economic life of households in Armenia. The justification for that is the size of the market, access to or availability of social and economic infrastructure, etc. In this regard, Armenia was divided into 5 strata: 1) Yerevan, 2) Large Cities, 3) Small and Medium Towns, 4) Large and Medium Villages and 5) Small Villages.

Large Cities were considered having more than 100 000 population: that is Gyumri and Vanadzor. The next largest urban community of Armenia – the fourth after Yerevan – is almost two times smaller than Vanadzor. Therefore, the remaining towns fall under the category of Small and Medium Towns (45 urban communities).

Small Villages are those with population of less than 500. We used the data of the 2001 Census report of the NSS of the RA for the identifying the size of communities.

The same stratification method was used for both the General and Targeted Surveys. Below the actual numbers of beneficiary households and total number of households are summarized in terms of the strata as defined above.

		Total number of households of Armenia thousand	Households, registered in the Family Benefit System		Actual number of beneficiary households as of April 2006	
			thousand	% of total	thousand	% of total
Stratum 1	Yerevan	279	38	14	25	9
Stratum 2	Large Cities	65	34	52	26	39
Stratum 3	Small and Medium Towns	179	49	28	34	19
Stratum 4	Large and Medium Villages	241	60	25	40	17
Stratum 5	Small Villages	17	7	41	4	26
<b>TOTAL Armenia</b>		<b>781</b>	<b>188</b>	<b>24.1</b>	<b>129</b>	<b>16.5</b>

The table above shows that the stratification of the general population is quite logical. The grouping proves the hypothesis that the strata differ in terms of living standards and welfare of their population. Thus, 14% of households in Yerevan consider themselves poor and in need of social assistance, whereas in Large Cities – 52%, Small Villages – 41% as compared to the total average for Armenia of 24%. The largest variation from the national average is recorded in Strata 1, 2 and 5. Only 9% are beneficiaries of the Family Benefit System in Yerevan, whereas in Large Cities – about 40% and in Small Villages – 26%.

These statistics are sufficient to substantiate and justify the stratification approach and one can state that the defined strata require deeper analyses or that this stratification will support increasing the efficiency of our survey.

## Sampling

The basis used for sampling was the number of households in each of the 5 strata in the general population. The sample (3800 households for the General Survey and 700 households for the Targeted Survey) was proportionally allocated within each stratum of the general population.

	General Population*		Sample**	
	General Survey	Targeted Survey	General Survey	Targeted Survey
<b>TOTAL HOUSEHOLDS</b>	<b>781</b>	<b>129</b>	<b>3,800</b>	<b>700</b>
<b>Yerevan</b>	<b>279</b>	<b>25</b>	<b>1,359</b>	<b>136</b>
<b>Other Cities and Towns</b>	<b>244</b>	<b>60</b>	<b>1,187</b>	<b>321</b>
Large Cities	65	26	315	139
Small and Medium Towns	179	34	872	182
<b>Villages</b>	<b>258</b>	<b>44</b>	<b>1,254</b>	<b>243</b>
Large and Medium Villages	241	40	1,170	219
Small Villages	17	4	84	24

\* Thousand households.

\*\* Number of actually interviewed households

During the second phase of sampling, the primary sampling units in each stratum of the sample were defined and individual households from each stratum were randomly selected. In particular, number of the primary sampling units in Stratum 1 (Yerevan) was 12 (in proportion to the number of communities in Yerevan), while the number of households in each primary sampling unit is proportionate to the share of the weight of initial primary sampling unit in the general population. The number of sampling units in Stratum 2 is 2 and the sample of households from this Stratum is again selected in proportion to the share of units (Gyumri and Vanadzor) in the general population.

The number of units in the remaining Strata was determined through random selection based on probability weights. In Strata 3 and 4, minimum numbers were set for selection households from each community: not less than 10 households in Large and Medium Villages, and not less than 5 households in Small Villages.

Below we discuss the sampling methodology on the example of Stratum 3. 45 urban communities contained in this Stratum were listed in the descending order of the number of households therein: subsequently, probability weights were assigned

to each of them corresponding to the share of the households in each community in the total for the Stratum. Then, random numbers were assigned from the interval of 0-1 to each community. Thus, based on the assigned random numbers and probability scores, the required sample size for Stratum is determined for randomly selected communities: Subsequently, the households in a community are also randomly selected.

As a result, the sample covers entire Armenia and includes 108 rural, 40 urban communities and 12 communities in Yerevan. The review of the selected addresses also shows that the interviews were vastly dispersed in large communities in order to ensure that the sample is as much representative as possible. Thus, the Survey was unprecedented for Armenia in terms of coverage and dispersion of communities which certainly positively affected the quality of the results.

**Comparison of Household numbers and breakdown of urban and rural settlements in the surveys conducted by the NSS of the RA and EDRC**

	1996	1998/99	2001	2002	2003	2004	2006
	NSS of RA						EDRC
Number of Households (Sample)	4920	3600	4037	4634	4641	6816	3800
Number of Urban Settlements in the Sample	28	33	19	14	17	43	41*
Number of Rural Settlements in the Sample	100	71	28	30	20	216	108
Total Number of Settlements in the Sample	128	104	47	44	37	259	149

\* Yerevan with its 12 district communities is taken as one settlement.

## The Questionnaire

The same Questionnaire was used for both the General and Targeted Surveys. Drafting of the Questionnaire started from the clarification of the requirements towards the field works and determination of expected results thereof. The Questionnaire was further developed based on the results of the pilot survey.

As it was recommended by the working group established by the Client, the questionnaires used for Household Survey of the NSS of the RA and Survey of Socio-Economic Situation of Households in Aragatsotn Marz (implemented by the Ministry of Labor and Social Issues) were used as basis for the development of the Questionnaire. The Questionnaire, as well as the databases of both (General and Targeted) Surveys in SPSS format, can be found on the CD-Rom attached to the present report.

## Survey Management and Supervision

Although the general population was divided into 5 strata, the management of the survey (planning of field works, instruction of interviewers, supervision) was carried out in terms of Provinces (Marzes) of Armenia. For each Province, depending on the volumes and number of interviews, interviewers were selected: they were instructed through trainings. Later on, the day-to-day supervision and instruction of interviewers were carried out by Marz coordinators.

One Marz Coordinator was appointed in each Marz to coordinate the activities under the Field works, to supervise the interviewers and verify the results of interviews. Marz Coordinators were instructed and trained separately. In total, 120 interviewers and 11 Marz Coordinators participated in the Survey.

The supervision of Field works was also carried out by the Head Office 1) through random checks and 2) logical testing and comparison of data. In the first case, random visits were used, while for the second case – preliminary data was compared to the “Database on Household Social Vulnerability Evaluation” of the Ministry of Labor and Social Issues, as well as other available information. The preliminary results were tested logically; consequently, visits took place in order to verify the collected data. In cases where omissions and mistakes were found, interviews were carried out anew in the given community. Efficiency and intensity of checks and tests allow for concluding that the Field works (data collection) were carried out in accordance with the set methodology.

## Refusals or Failed Interviews

In cases when the interview in originally selected addresses were not implemented because of refusals or any other reason, the original address was replaced with another one from a back-up mirror sample. As a result, the originally planned sample size per strata was maintained.

The cases of refusal were very few in Marzes and quite significant in Yerevan. Below are presented the numbers of failed interviews broken down per reasons (in Yerevan districts).

### Failed interviews in Yerevan broken down per reasons

	Community	Nobody home (locked door)	Refusal	Address is used for other purpose	Other reasons	Total number of failures to interview	Share of failed interviews in the sample
1	Kentron	31	11	10	4	56	34.1%
2	Arabkir	33	24	7	5	69	42.9%
3	Davitashen	28	7	1	-	36	31.3%
4	Zeytun	17	4	2	4	27	17.8%
5	Avan	3	1	1	-	5	11.6%
6	Ajapnyak	19	7	3	2	31	36.9%
7	Malatia	15	9	8	2	34	19.9%
8	Shengavit	17	8	3	-	28	15.1%
9	Erebuni	53	21	8	-	82	42.9%
10	Nor Norq	42	7	6	-	55	25.5%
11	Norq-Marash	1	-	-	-	1	20.0%
12	Nubarashen	2	-	-	-	2	40.0%
<b>Total</b>		<b>261</b>	<b>99</b>	<b>49</b>	<b>17</b>	<b>426</b>	<b>28.5%</b>

## Quality of Results and Comparison

The comparison of results and finding of the Survey with official statistics and other studies speaks in favor of the quality of the Survey. A number of indicators entirely correspond to the official statistics, e.g. the average size of households (4.1 members), share of the elderly in the total population (13.1%), share of disabled (4.3% against the official 4.4%), etc. The deviation of other indicators from the official data is within reasonable limits and represents a good alternative for the statistics for the stated period. The tables below summarize the official data for 2001 and 2004, as well as 2006 data obtained through the Survey.

### Comparative breakdown of households per sizes, % of total

<i>Household composition</i>	According to the 1998/99 Survey of the NSS	According to the 2004 Survey of the NSS	According to the 2006 General Survey of the EDRC
One-member	8.4	10.9	9.3
Two-member households	13.1	16.5	14.3
Three-member households	12.2	14.6	14.1
Four-member households	21.9	21.6	21.7
Five-member households	20.1	17.2	18.7
Households with six and more members	24.6	19.2	22.0

### Comparative breakdown of households per number of children, % of total

<i>Household composition</i>	2001 Census	2004 NSS Survey	2006 General Survey of EDRC
Households with one child	20.2	22.2	22.0
Households with two children	23.3	22.9	23.1
Households with three children	9.4	7.2	7.8
Households with four children	2.3	1.8	1.9
Households with five and more children	0.8	0.6	0.3
No children	44.0	45.3	44.8

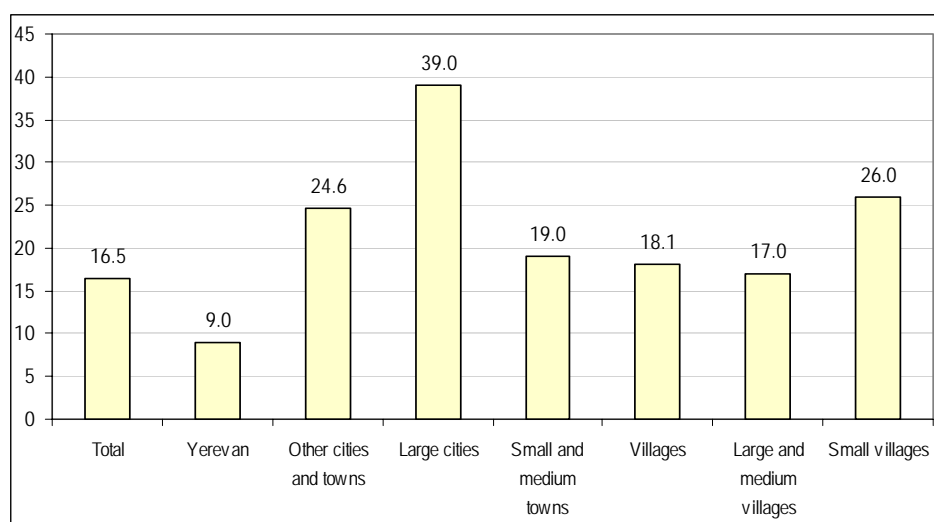
## B. Main Findings

The present Section briefly describes the findings and results of the EDRC Household Survey by comparing the findings of the General Survey and Targeted Survey. In other words, the analyses cover both all households (total population) of Armenia and/or the households that receive Family benefits from the Government, hereinafter – beneficiaries. The following strata were used for the analyses: 1) Yerevan, 2) Large Cities (includes Gyumri and Vanadzor), 3) Small and Medium Towns (includes all the remaining urban communities of Armenia), 4) Large and Medium Villages (with population of more than 500) and 5) Small Villages (with population of less than 500).

### Size and Composition of Households in Armenia

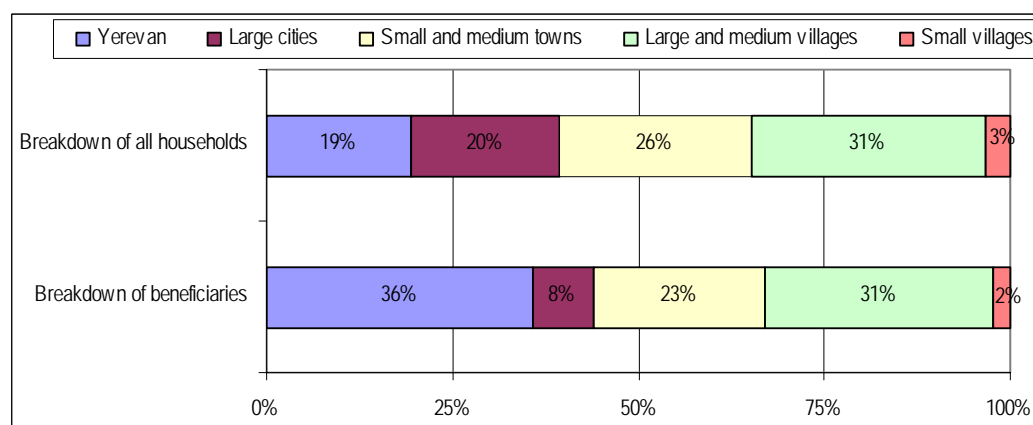
As of the beginning of 2006, permanent population of Armenia reached 3.2 mln that constituted 779 thousand households<sup>2</sup>. 16.5% of households or 129 thousand families<sup>3</sup> are paid Family benefits by the Government. The proportions of recipient families in total number of households vary depending on the location and region. 9% of households in Yerevan receive Family benefits, 26% - in Small Villages and 39% - in Large Cities (this is the highest share nationwide).

Figure 1: Share of beneficiary households in total (%)



As a result, the geographic spread of beneficiaries is completely different from the spread and breakdown of total population per regions. 36% of households live in Yerevan; however, only 19% of all beneficiary families of country live in Yerevan. On the other hand, the number of beneficiary families in Large Cities is almost equal to that of in Yerevan, although the number of households in these cities is more than 4 times less than in Yerevan.

Figure 2: Breakdown of total households and beneficiaries in urban and rural areas (%)



<sup>2</sup> Source: NSS of RA, based on 2001 Census.

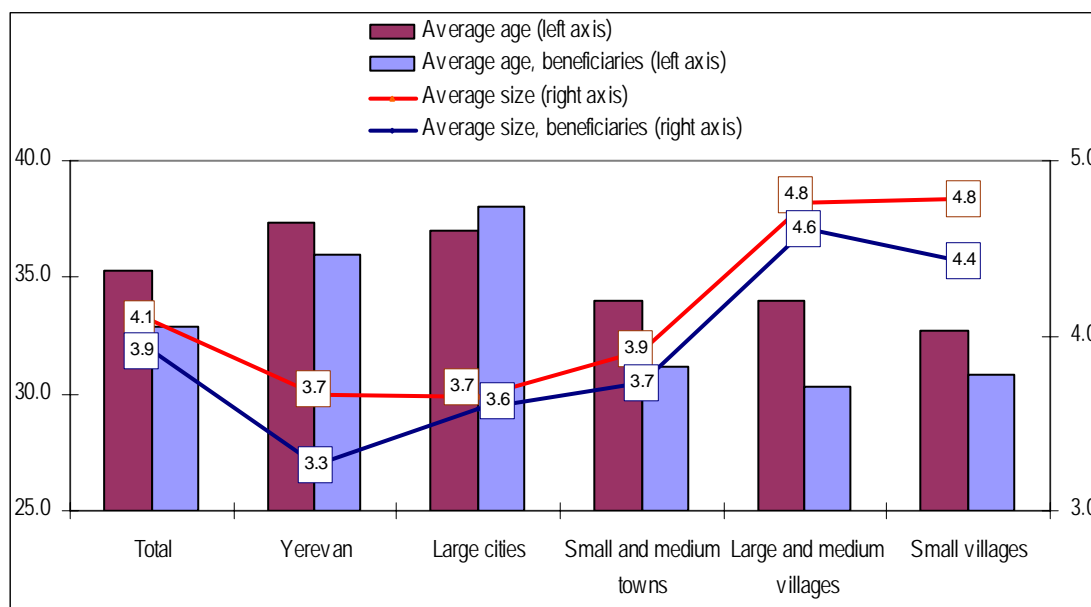
<sup>3</sup> Families and households in this report are used interchangeably to express the same meaning.

An average household in Armenia consists of 4 members, including 3.7 members in big cities (Yerevan, Gyumri, and Vanadzor) and 4.8 members in villages. The size of an average household receiving transfers and benefits is 3.9 members. The largest variance from the average is recorded in Yerevan (3.3 members) and in Small villages (4.4 members).

The average age is 35.3 years. The population in Yerevan and Large Cities is relatively older than the national average, while in small towns and villages – it is younger.

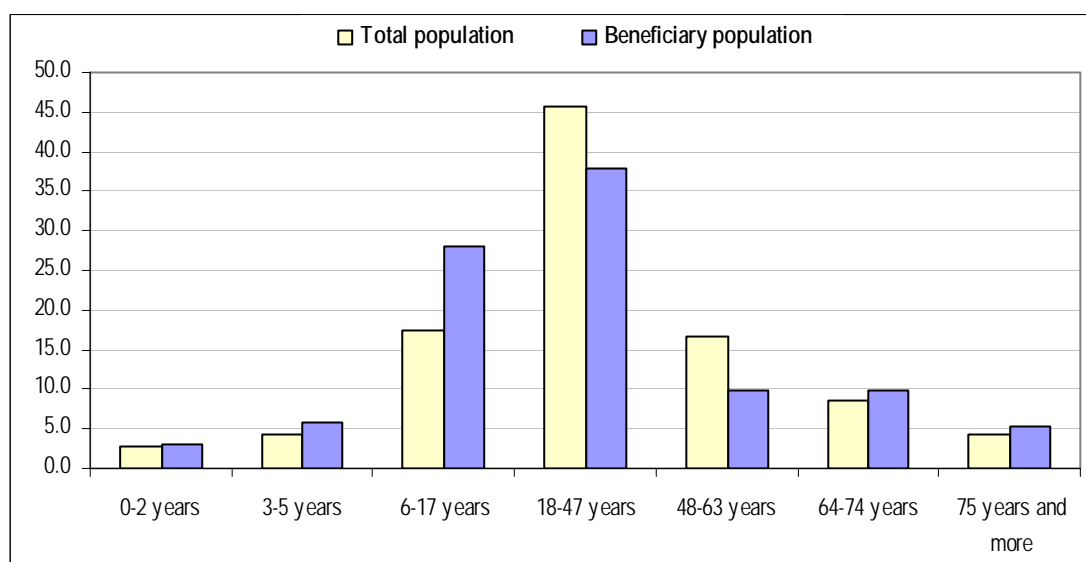
The families that receive transfers and benefits are relatively younger - 32.9 years, except for the families in Large Cities where and average age of a beneficiary family is older - 38 years.

Figure 3: Average size and age of households



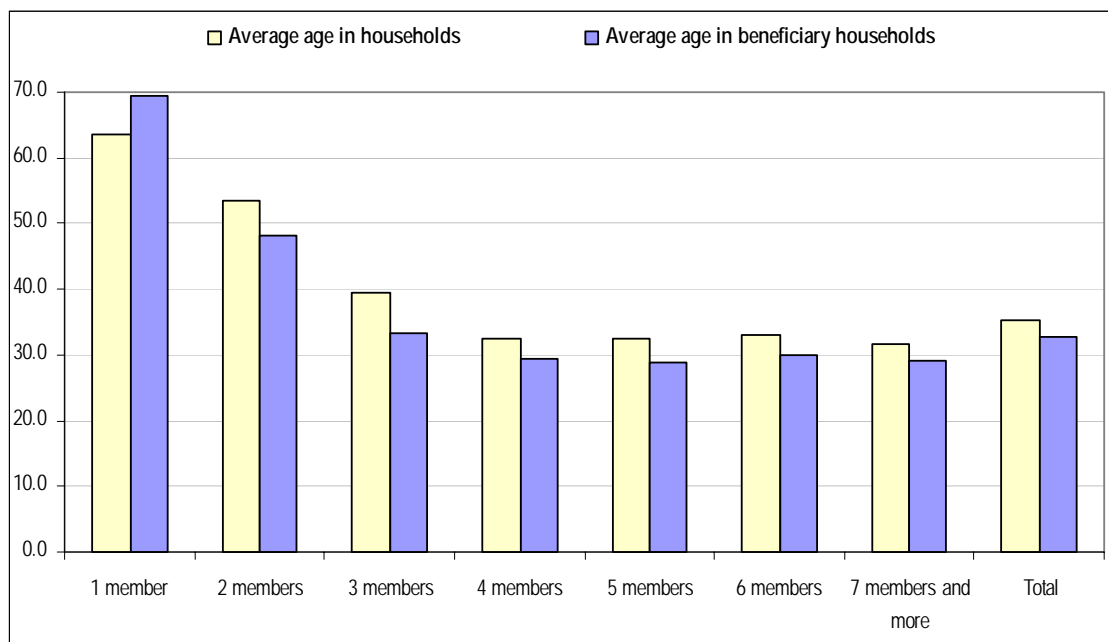
About half of the population in Armenia (46%) is in the age of 18-47 years, while children under 18 constitute 25%, of which children under 7 – 7% of total population.

Figure 4: Breakdown of population per age groups, % of total



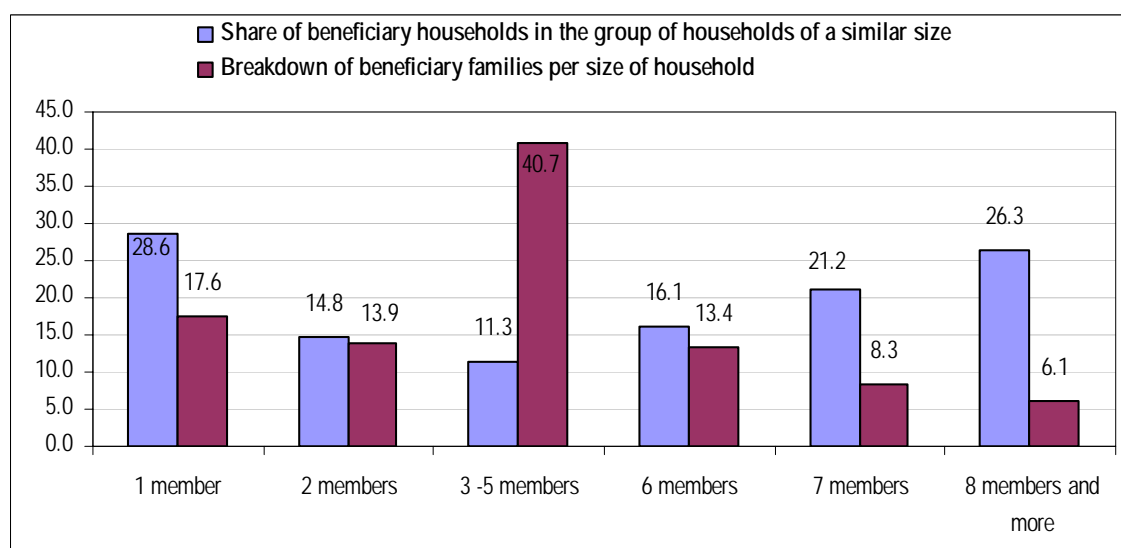
The share of the population below 18 and above 64 in total is larger for beneficiary households than for all households. Nevertheless, about 48% of the beneficiaries are in the age of 18-64 years. The families which receive benefits are quite younger regardless of the size of the household, except for the 1-member households which are normally older than non-beneficiary families.

Figure 5: Average age of households per household size groups



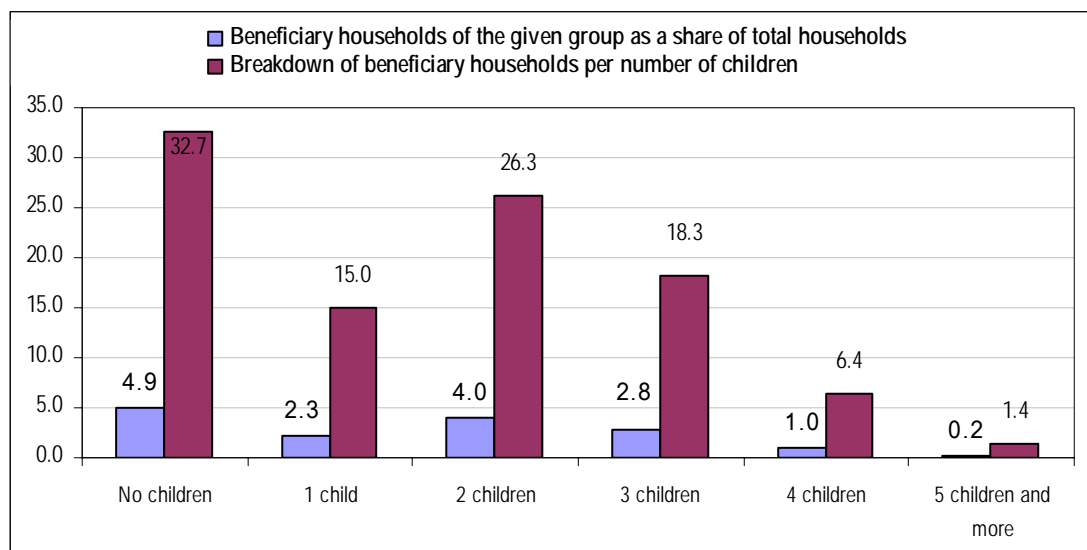
One can get an impression that Family Benefits are transferred to large families (with many children) and single elderly. About 29% of 1-member households are beneficiaries, however they constitute 18% of all beneficiary households. Only 14% of beneficiary households have 7 and more members. 41% of beneficiary households have 3-5 members; although they constitute 11% of total households with 3-5 members (see Figure 6). 38% of households have 2-4 members.

Figure 6: Beneficiary households in household size groups, %



Thus, the correlation between the size of the household and being beneficiary is evident, although not very strong. Figure 5 displays that the beneficiary families are relatively young: this hints that those are families with children. However, Figure 7 shows that the Family benefits do not explicitly target children or families with many children. 33% of beneficiary families do not have children at all, although only 5% of all families with no children receive transfers. 40% of beneficiary households have 1 or 2 children, only 1% of households with 4 children receive benefits and 0.2% of families with 5 and more children. The share of families with 4 and more children is 8% in total beneficiary families.

Figure 7: Beneficiary households in the respective groups of households with children, %

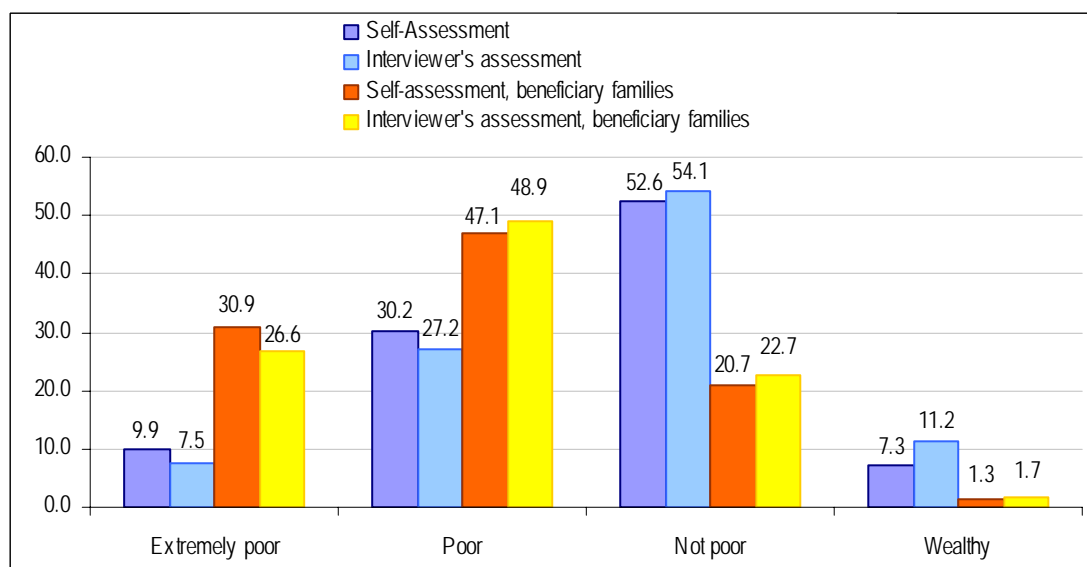


Thus, according to the analyses, the majority of beneficiary households in terms of size and age resemble the most widespread families in Armenia. Majority of beneficiaries are families with average number of members, with 1-2 children in the age of 6-18 years and single elderly. In general, according to the Survey, the share of families of various social groups is insignificant (see Annexes), except the families having children of 3-18 years, which constitute 37% of the beneficiary population. The households consisting of age pensioners have the next largest share, however, they constitute 13-16% in each stratum, followed by the group of 2<sup>nd</sup> category of Disabled (3-7%) and children of single parents (3-5%).

### Perception of Poverty and Needs

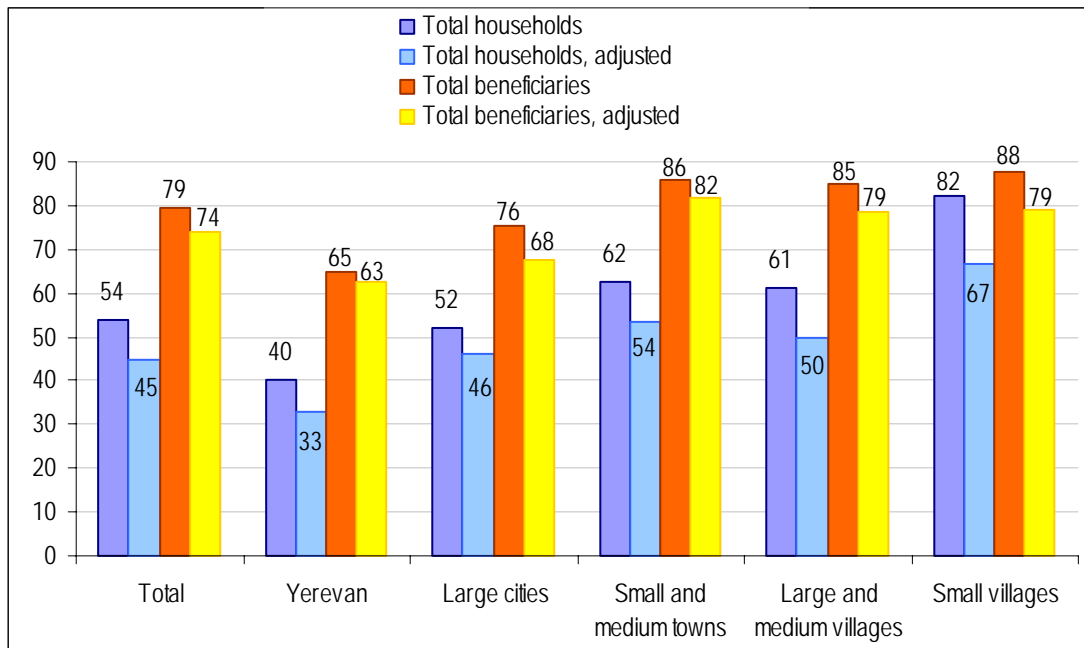
In general, the perception of poverty is very high in Armenia: about 40% of households consider themselves poor, including 10% - extremely poor. The assessments of interviewers do not differ much from that. In general, this is quite logical and, as subjective assessments; do not vary much from the official statistics. It is worth noting the self-assessment of the welfare by the beneficiaries. 21% of them did not consider themselves poor, while 1.3% even evaluated their living standards as wealthy or satisfactory. Nonetheless, 31% of the beneficiaries consider themselves extremely poor, and 47% - poor.

Figure 8: Subjective assessment of poverty, % of total households



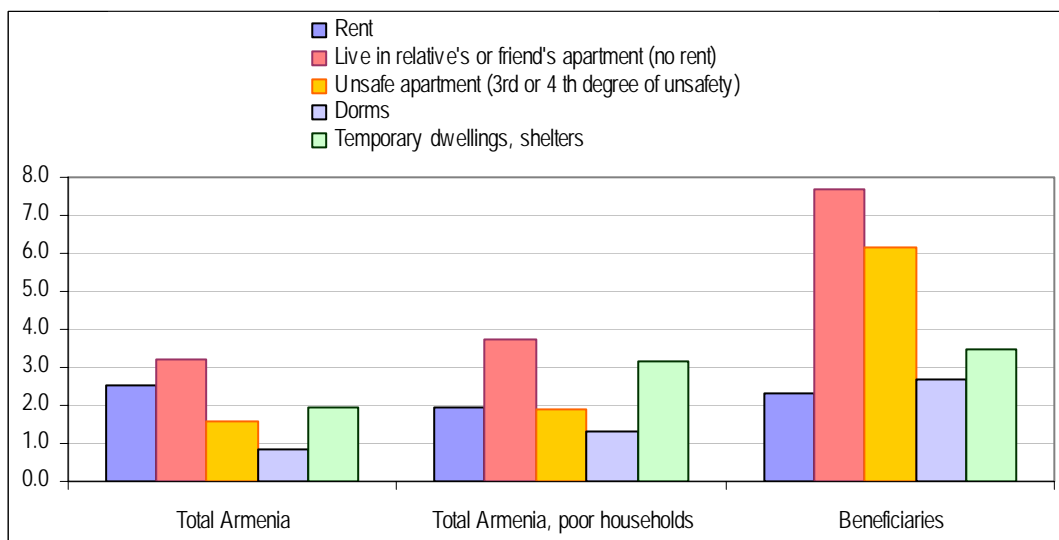
Another indicator for poverty assessment in the Survey was the estimate of per capita current expenditures of households. According to that, 54% of households in Armenia spend below the national poverty line<sup>4</sup>, i.e. they are poor or extremely poor. This indicator was later adjusted taking into consideration also the control variables on household's income, expenditures, acquisition of assets and propensity to save. As a result, 45% of households in Armenia are poor or extremely poor. The highest poverty indicator was recorded in Small Villages (67%) and in Small and Medium towns (54%). It was estimated that 26% of beneficiary households spend above the national poverty line, in other words they are not poor. This is true for 37% of beneficiary households in Yerevan, 32% in Large Cities and 21% in Villages (see Figure 9).

Figure 9: Households spending below AMD 20 000 per capita on current expenditure items



Housing conditions in Armenia are not too bad: most of the households live in their own apartments. Less than 10% of households need own apartment. This problem is acute for 12% of beneficiary families and 6% of households that consider themselves poor, since they live in unsafe dwellings and in dorms.

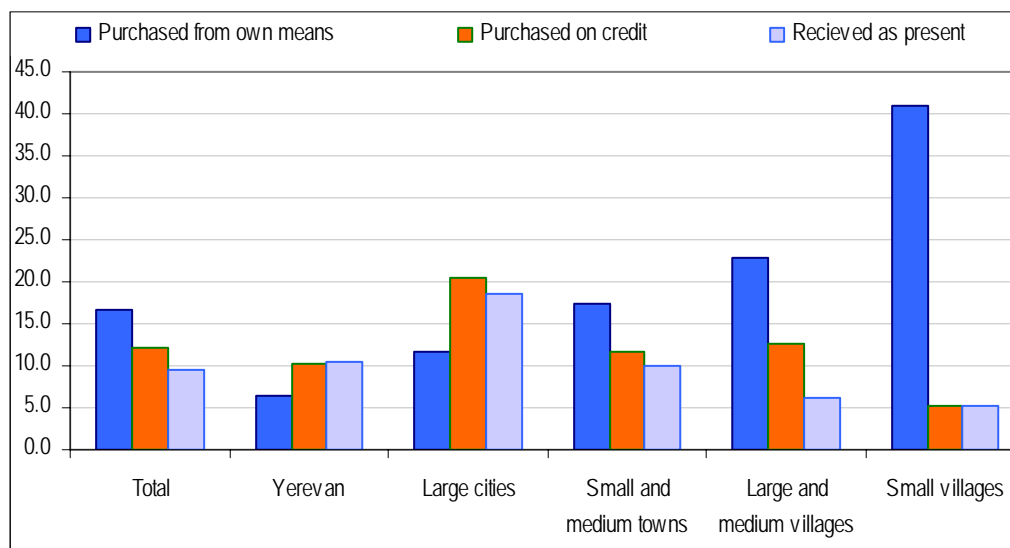
Figure 10: Apartment and dwelling needs



<sup>4</sup> Aggregate poverty line was assumed AMD 20 000 per capita per month: According to the 2005 Integrated Household Survey of the NSS RA the poverty line was AMD 20289 monthly.

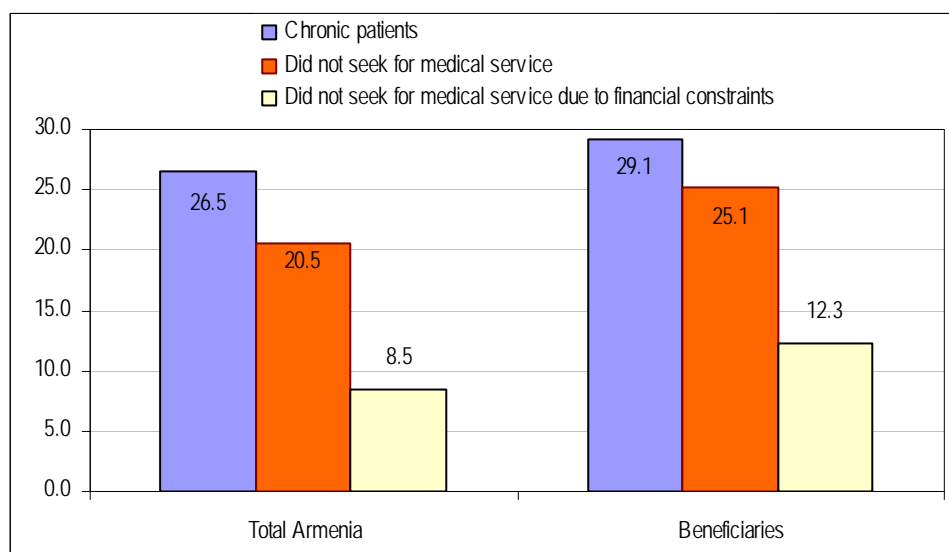
About 67% of poor households have not recorded any increase in assets (property and home appliances) during the last 6 years. This indicator is even higher in Yerevan – 75%.

Figure 11: Purchases of property and home appliances since 2005 in families considering themselves poor



There are chronic patients or people that need permanent treatment in about 27% of households in Armenia. The same indicator reaches 30% among the beneficiary households. 20% of all households and 25% of beneficiary households did not visit a doctor (whenever needed) during the previous year. 12% of households did not seek medical services due to financial constraints.

Figure 12: Healthcare needs

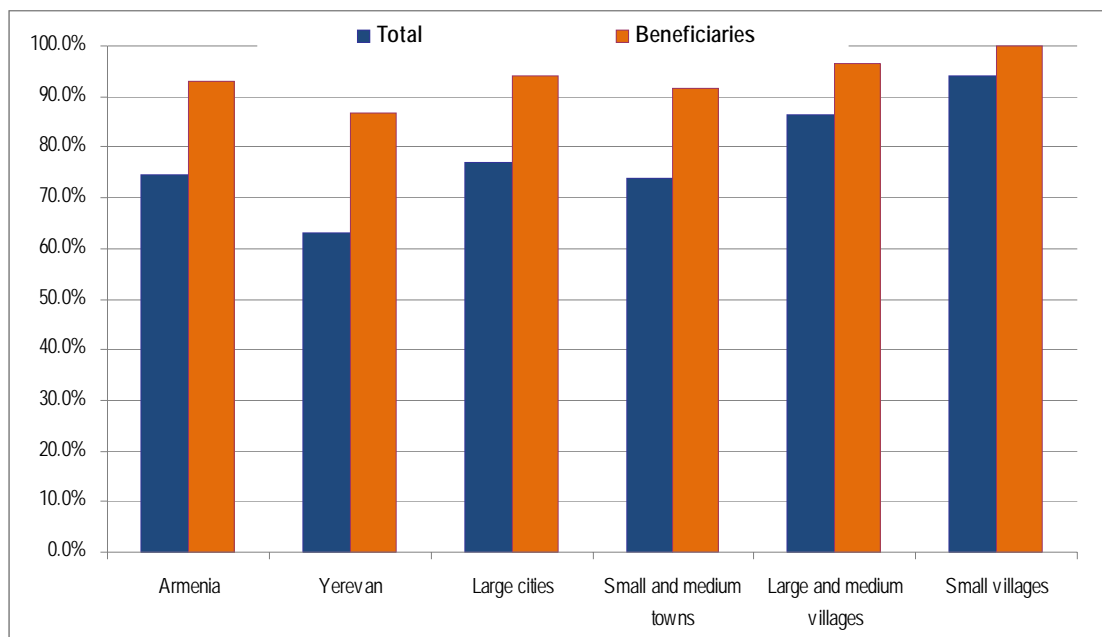


### Social Services and Transfers

75% of Armenian households believe that they need social assistance or social services of the Government. This self-assessed need is higher in rural areas - 87%, including 94% in Small Villages. The self-assessed need is lower in towns and cities where 25% of households believe that they need social assistance or transfers, while 37% of households in Yerevan are of the opinion that they do not need such services.

The picture is slightly different among families that consider themselves poor and beneficiary households. 91% of the families considering themselves poor (in particular, rural families) need social services of the Government. 93% of beneficiary families believe they need such services, whereas the remaining 7%, although receiving assistance as of April, 2006, in fact confessed that they do not need such assistance.

Figure 14: Households that need social assistance or social services



Based on the needs assessment for the types of social services, the table below summarizes the types of named social services and their priorities.

#### Priorities of Social Services

N	Social Services	All households	Beneficiary households
1	Financial assistance: transfers	1	1
2	Small credit or loan for micro or small businesses	3	2
3	Provision of food or privileges	2	3
4	Nursing the elderly at home	5	4
5	Nursing of elderly in elderly houses	6	6
6	Round-the-clock childcare services	4	8
7	Provision of temporary shelter	7	7
8	Psychologist's services to the disabled	8	5
9	Rehabilitative and medical services to the disabled	9	9
10	Legal assistance and advice	10	11
11	Information on social services	11	10

As it can be seen from the findings, all type of households gave the highest priority to the “financial assistance: transfers”.

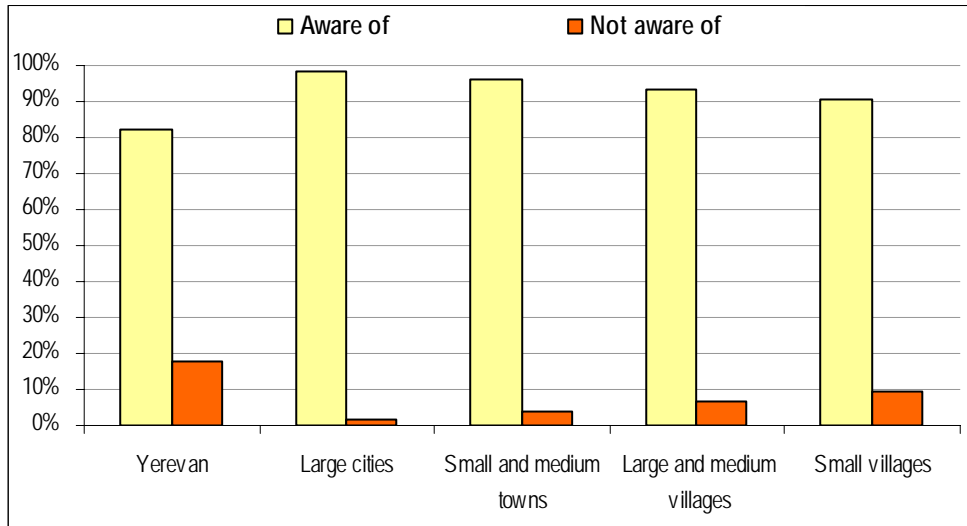
The next priority service was named “Provision of food and granting of privileges”. This service was less important to low-income households, including the beneficiary families. Instead, the beneficiaries gave high priority to the “Provision of small credits for small and micro-business”.

Beneficiary families give less priority to “Round-the-clock childcare” than to the “Provision of psychological services to the disabled”: this shows that the disabled prevail in beneficiary families and, therefore, such services are given higher priority. The least priority is given to “Legal advice” and “Provision of information on social services”.

## Family Benefit System

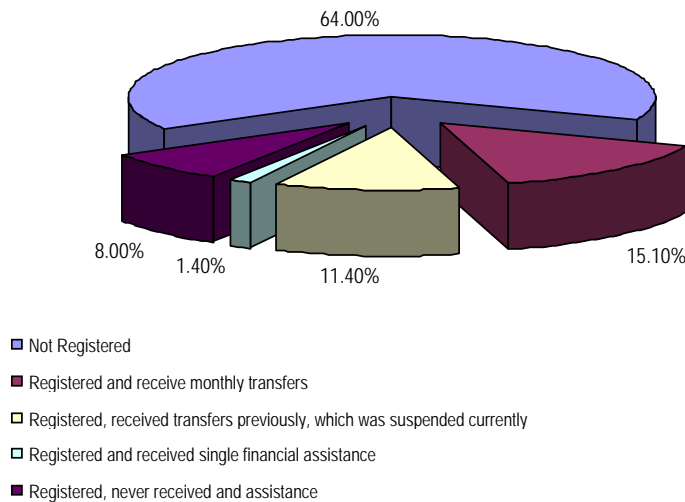
It is worth noting that the Family Benefit System currently is the most wide-spread and well-known public program. This is proved by the findings of the Survey. 90.3% of households were aware of the program, with slightly lower awareness in Yerevan (82%). In other cities and towns 97% of households are aware of the Family Benefit System, which is explained by large numbers of beneficiaries in these communities. Awareness is high in rural areas, too (93%).

Figure 15: Awareness of the Family Benefit System



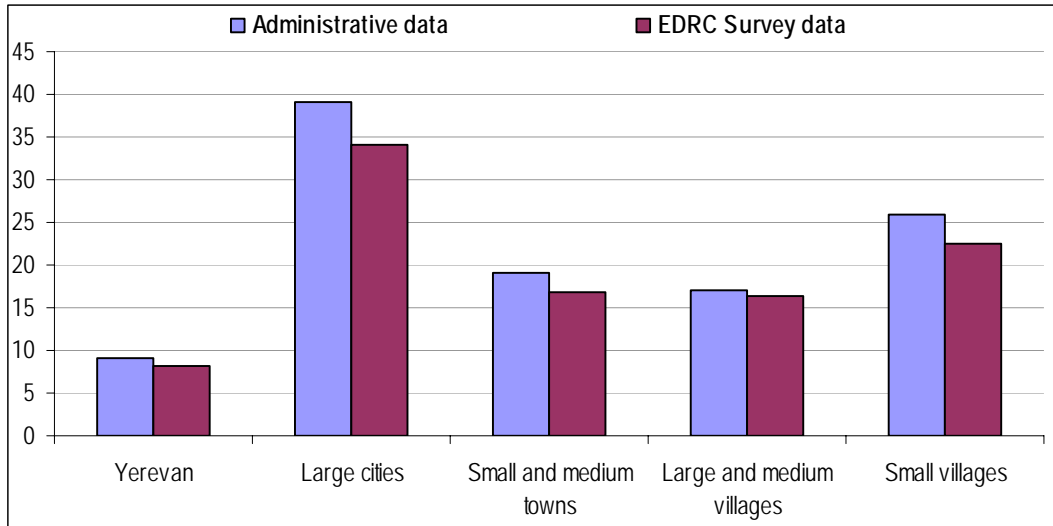
According to the Survey, only 46% of households have never had any interaction with the Family Benefit System. 11% of households were formerly included in the system and received transfers. Due to efforts to better target the transfers and increase efficiency during the last years many of them were left out of the system.

Figure 16: Coverage of the Family Benefit System



According to the Survey, 24.6% of households are registered in the Family Benefit System which corresponds to the administrative information. About 8% of registered households were rated lower than necessary to be eligible for the benefit, whereas 1.4% was deemed eligible only for single-time transfer. About 15% of households do receive Family Benefits: this is slightly different from the official data (16.5% of households receive benefits). The deviation is mostly explained by the fact that Beneficiary families tend to hide that they do receive transfers. EDRC supervisors also have seen witnesses of such cases when supervising the Field works. The deviation is especially large in Large Cities and Small Villages.

Figure 17: Share of beneficiary households in total



The assessment of the fairness of the system shows that the opinions almost equally dispersed: about one third believes that it is fair, one third – not fair and about one third (slightly more than one third) could not answer. I.e. there is no clear perception of the fairness of the Family Benefit System. Although, if the Large Cities are taken, majority there believes (68%) that the system is not fair.

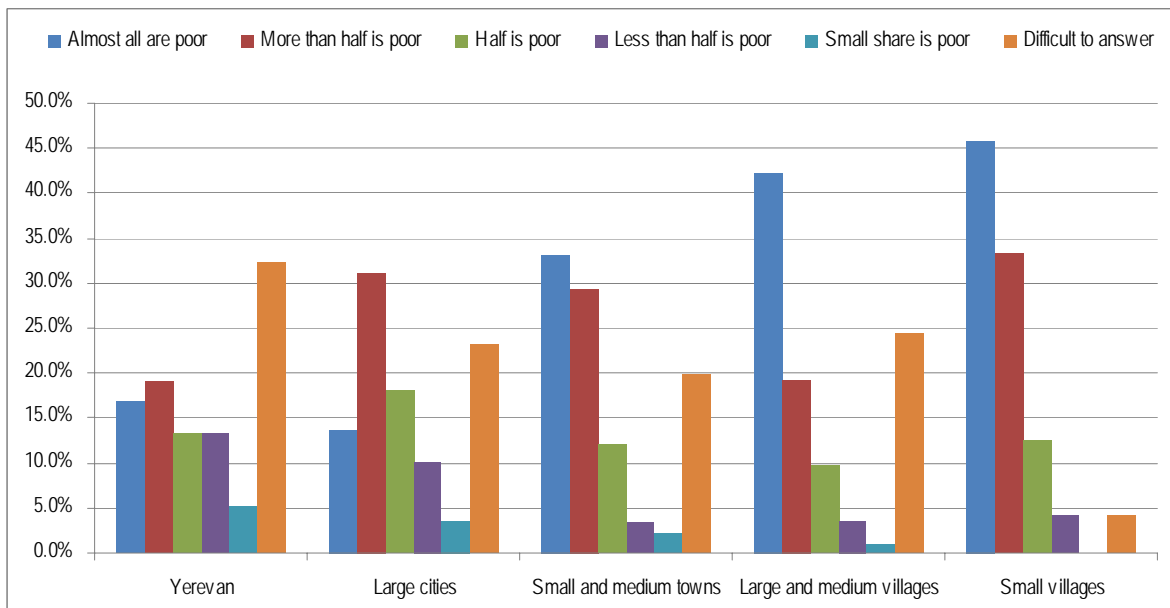
Beneficiaries give more favorable evaluation for the fairness of the system: about half of them are convinced that the system is fair and only 19% are of the opposite opinion (see Statistical Annexes).

Regardless of the assessment of system fairness, 34% of households believe that more than half of current beneficiary households are not in need: in Large Cities about 50% thinks the same way.

The reasons for rejection or suspension of the benefit payment are usually conveyed to the households verbally, however, there were cases when the reasons were not explained at all, which was relatively more frequent in Yerevan.

The reasons for rejection or suspension of the benefit payment are not always clear and understandable to the applicants: only half of those who were rejected understand the reasons.

Figure 18: Assessment of households: if the beneficiaries are in need



According to 29% of beneficiaries it is very difficult to collect the necessary documentation to apply for the benefit, including 39% in Yerevan and only 5% in Small Villages believe so. This can speak about potential differences in bureaucratic procedures in different areas.

# Annex 1. Statistical Data of the General Survey

## Table of Contents

Section A. General Demographic Picture .....	19
Table 1. Breakdown of households per number of members .....	19
Table 2. Breakdown of households per Strata according to the size .....	19
Table 3. Age breakdown of population .....	19
Table 4. Age breakdown of population per Strata .....	19
Table 5. Age breakdown of male and female population .....	20
Table 6. Age and Sex breakdown of population .....	20
Table 7. Share of population of social groups in total population (as share in total population) .....	20
Table 8. Breakdown of population in social groups per Strata .....	21
Section B. Education and Employment .....	21
Table 9. Educational level of people above 18 .....	21
Table 10. Educational level of people above 18 per Strata .....	21
Table 11. Attendance of education institutions by children .....	22
Table 12. Home computers .....	22
Table 13. Breakdown of the age group of 18-63 per type of employment .....	22
Table 14. Breakdown of the age group of 18-63 in Strata per type of employment .....	22
Section C. Healthcare .....	23
Table 15. Healthcare problems .....	23
Table 16. Househlds with healthcare problems broken down per Strata .....	23
Section D. Housing conditions and communal services .....	23
Table 17. Possession/ownership of apartments by households .....	23
Table 18. Possession/ownership of apartments by households, broken down per Strata .....	23
Table 19. Households with no communal services at home .....	24
Table 20. Breakdown of households with no communal services at home .....	24
Section E. Family Benefit System .....	25
Table 21. Awareness of the Family Benefit System .....	25
Table 22. Households registered in the Family Benefit system .....	25
Table 23. Breakdown of households registered in the Family Benefit system per Strata .....	25
Table 24. Reasons for not applying for the Family Benefit .....	25
Table 25. Notification on grounds for rejection of the Family benefit .....	26
Table 26. Perception of the grounds for rejection by households .....	26
Table 27. Collection of necessary documentation for the Family benefit system .....	26
Table 28. Evaluation of the Social inspectors' performance .....	26
Table 29. Assessment of system fairness .....	26
Table 30. Assessment of "real" poverty of beneficiaries .....	26
Section F. Agriculture .....	27
Table 31. Households that own land plot, orchard or and other agricultural land .....	27
Table 32. Households that own land plot, orchard or and other agricultural land, breakdown per Strata .....	27
Table 33. Types of land and other specific parameters (as determined in the scale below) .....	27
Table 34. Use of land lots .....	27
Table 35. Main reasons for not using land .....	28
Table 36. Possession of livestock in rural areas .....	28
Table 37. Main types of livestock in rural areas .....	28

## Section A. General Demographic Picture

Table 1: Breakdown of households per number of members

Number of members	Total	Yerevan	Other cities and towns	Large cities	Small and medium towns	Villages	Large and medium villages	Small villages
1 member	9%	12%	11%	12%	11%	5%	5%	6%
2 members	14%	18%	15%	17%	14%	10%	10%	11%
3 members	14%	17%	16%	17%	15%	9%	9%	7%
4 members	22%	23%	22%	24%	22%	20%	20%	11%
5 members	19%	16%	19%	18%	19%	21%	21%	26%
6 members	13%	8%	10%	7%	10%	20%	20%	24%
7 and more members	9%	6%	7%	5%	8%	16%	16%	15%
<b>Total</b>	<b>100%</b>	<b>100%</b>	<b>100%</b>	<b>100%</b>	<b>100%</b>	<b>100%</b>	<b>100%</b>	<b>100%</b>

Table 2: Breakdown of households per Strata according to the size

Number of members	Total	Yerevan	Other cities and towns	Large cities	Small and medium towns	Villages	Large and medium villages	Small villages
1 member	100%	45%	38%	11%	27%	17%	16%	1%
2 members	100%	45%	32%	10%	23%	23%	21%	2%
3 members	100%	43%	35%	10%	25%	22%	20%	1%
4 members	100%	38%	32%	9%	23%	30%	29%	1%
5 members	100%	32%	32%	8%	24%	37%	34%	3%
6 members	100%	24%	24%	5%	19%	52%	48%	4%
7 and more members	100%	22%	24%	5%	19%	55%	51%	4%

Table 3: Age breakdown of population

Age groups	Total	Yerevan	Other cities and towns	Large cities	Small and medium towns	Villages	Large and medium villages	Small villages
0-2 years	2.9%	2.5%	3.1%	2.3%	3.4%	3.0%	2.9%	4.0%
3-5 years	4.3%	4.0%	4.0%	2.4%	4.5%	4.9%	4.8%	6.5%
6-17 years	17.5%	14.7%	16.5%	16.3%	16.6%	20.6%	20.6%	20.4%
18-47 years	45.6%	45.1%	47.0%	45.9%	47.3%	45.0%	45.0%	44.0%
48-63 years	16.6%	19.0%	18.7%	19.3%	18.4%	13.0%	13.0%	12.9%
64-74 years	8.7%	9.9%	7.7%	9.7%	7.0%	8.5%	8.6%	7.0%
75 years and above	4.4%	4.7%	3.2%	4.0%	2.9%	5.1%	5.0%	5.2%
<b>TOTAL</b>	<b>100.0%</b>	<b>100.0%</b>	<b>100.0%</b>	<b>100.0%</b>	<b>100.0%</b>	<b>100.0%</b>	<b>100.0%</b>	<b>100.0%</b>

Table 4: Age breakdown of population per Strata

Age groups	Total	Yerevan	Other cities and towns	Large cities	Small and medium towns	Villages	Large and medium villages	Small villages
0-2 years	100.0%	27.8%	31.8%	6.1%	25.8%	40.4%	36.8%	3.6%
3-5 years	100.0%	29.6%	26.9%	4.2%	22.8%	43.5%	39.6%	3.9%
6-17 years	100.0%	26.9%	27.8%	6.9%	20.8%	45.3%	42.3%	3.0%
18-47 years	100.0%	31.8%	30.3%	7.5%	22.8%	37.9%	35.4%	2.5%
48-63 years	100.0%	36.8%	33.1%	8.6%	24.5%	30.0%	28.0%	2.0%
64-74 years	100.0%	36.7%	25.9%	8.3%	17.6%	37.4%	35.3%	2.1%
75 years and above	100.0%	34.6%	21.1%	6.7%	14.4%	44.3%	41.2%	3.1%

**Table 5: Age breakdown of male and female population**

Age group per sexes	Total	Yerevan	Other cities and towns	Large cities	Small and medium towns	Villages	Large and medium villages	Small villages
<b>Male</b>	<b>100.0%</b>	<b>100.0%</b>	<b>100.0%</b>	<b>100.0%</b>	<b>100.0%</b>	<b>100.0%</b>	<b>100.0%</b>	<b>100.0%</b>
0-17 years	26.7%	23.3%	26.0%	21.7%	27.4%	29.9%	29.9%	30.5%
18-47 years	46.6%	46.3%	48.0%	49.1%	47.6%	45.7%	45.5%	48.7%
48-63 years	15.4%	17.7%	16.6%	17.5%	16.3%	12.8%	12.8%	12.2%
64 years and above	11.3%	12.7%	9.4%	11.8%	8.6%	11.6%	11.8%	8.6%
<b>Female</b>	<b>100.0%</b>	<b>100.0%</b>	<b>100.0%</b>	<b>100.0%</b>	<b>100.0%</b>	<b>100.0%</b>	<b>100.0%</b>	<b>100.0%</b>
0-17 years	22.9%	19.4%	21.3%	20.6%	21.6%	27.3%	27.0%	31.2%
18-47 years	44.8%	44.2%	46.0%	43.0%	47.1%	44.3%	44.7%	39.5%
48-63 years	17.6%	20.1%	20.5%	20.9%	20.4%	13.1%	13.1%	13.7%
64 years and above	14.7%	16.3%	12.1%	15.5%	10.9%	15.3%	15.3%	15.6%

**Table 6: Age and Sex breakdown of population**

Age group per sexes	Total	Yerevan	Other cities and towns	Large cities	Small and medium towns	Villages	Large and medium villages	Small villages
<b>Male</b>	<b>47.4%</b>	<b>45.3%</b>	<b>48.1%</b>	<b>47.3%</b>	<b>48.4%</b>	<b>48.6%</b>	<b>48.6%</b>	<b>49.0%</b>
0-17 years	12.7%	10.5%	12.5%	10.3%	13.3%	14.5%	14.5%	14.9%
18-47 years	22.1%	21.0%	23.1%	23.2%	23.0%	22.2%	22.1%	23.9%
48-63 years	7.3%	8.0%	8.0%	8.3%	7.9%	6.2%	6.2%	6.0%
64 years and above	5.4%	5.8%	4.5%	5.6%	4.2%	5.6%	5.8%	4.2%
<b>Female</b>	<b>52.6%</b>	<b>54.7%</b>	<b>51.9%</b>	<b>52.7%</b>	<b>51.6%</b>	<b>51.4%</b>	<b>51.4%</b>	<b>51.0%</b>
0-17 years	12.1%	10.6%	11.1%	10.9%	11.1%	14.0%	13.9%	15.9%
18-47 years	23.5%	24.2%	23.9%	22.7%	24.3%	22.8%	23.0%	20.1%
48-63 years	9.3%	11.0%	10.7%	11.0%	10.5%	6.7%	6.7%	7.0%
64 years and above	7.7%	8.9%	6.3%	8.2%	5.6%	7.9%	7.9%	8.0%

**Table 7: Share of population of social groups in total population (as share in total population)**

Social groups	Total	Yerevan	Other cities and towns	Large cities	Small and medium towns	Villages	Large and medium villages	Small villages
Age pensioners	<b>13.9%</b>	15.6%	11.3%	13.5%	10.6%	14.4%	14.6%	12.2%
Single age pensioner	<b>0.8%</b>	1.0%	1.1%	1.3%	1.0%	0.5%	0.4%	0.7%
Disability, group I	<b>0.6%</b>	0.6%	0.5%	0.7%	0.4%	0.6%	0.6%	0.7%
Disability, group II	<b>2.5%</b>	2.9%	2.9%	2.7%	2.9%	2.0%	2.0%	1.5%
Disability, group III	<b>0.9%</b>	1.0%	1.1%	1.1%	1.1%	0.7%	0.7%	0.2%
Handicapped children	<b>0.2%</b>	0.1%	0.2%	0.3%	0.2%	0.3%	0.3%	0.0%
Pregnant women (20 months and more)	<b>0.3%</b>	0.3%	0.3%	0.3%	0.3%	0.3%	0.3%	0.0%
Children with one parent (up to the age of 21)	<b>0.9%</b>	0.7%	1.3%	1.0%	1.4%	0.9%	0.9%	0.7%
Children with no parents (up to the age of 21)	<b>0.0%</b>	0.1%	0.0%	0.1%	0.0%	0.0%	0.0%	0.0%
Child of divorced parents or of a single mother	<b>0.7%</b>	1.1%	0.9%	2.2%	0.5%	0.2%	0.2%	0.0%

**Table 8: Breakdown of population in social groups per Strata**

Social groups	Total	Yerevan	Other cities and towns	Large cities	Small and medium towns	Villages	Large and medium villages	Small villages
Age pensioners	100.0%	36.1%	24.0%	7.2%	16.8%	39.9%	37.7%	2.3%
Single age pensioner	100.0%	39.0%	39.0%	12.2%	26.8%	22.0%	19.5%	2.4%
Disability, group I	100.0%	34.1%	26.1%	9.1%	17.0%	39.8%	36.4%	3.4%
Disability, group II	100.0%	36.8%	33.2%	7.9%	25.4%	29.9%	28.4%	1.5%
Disability, group III	100.0%	34.8%	35.5%	9.2%	26.2%	29.8%	29.1%	0.7%
Handicapped children	100.0%	16.7%	30.6%	11.1%	19.4%	52.8%	52.8%	0.0%
Pregnant women (20 months and more)	100.0%	37.8%	26.7%	6.7%	20.0%	35.6%	35.6%	0.0%
Children with one parent (up to the age of 21)	100.0%	23.6%	41.0%	7.6%	33.3%	35.4%	33.3%	2.1%
Children with no parents (up to the age of 21)	100.0%	80.0%	20.0%	20.0%	0.0%	0.0%	0.0%	0.0%
Child of divorced parents or of a single mother	100.0%	50.5%	39.3%	23.4%	15.9%	10.3%	10.3%	0.0%

## Section B. Education and Employment

**Table 9: Educational level of people above 18**

Level of education	Total	Yerevan	Other cities and towns	Large cities	Small and medium towns	Villages	Large and medium villages	Small villages
Elementary (up to 3 years)	3.0%	1.5%	2.2%	2.0%	2.2%	5.0%	5.2%	2.2%
Incomplete secondary (8 years)	8.2%	5.5%	7.0%	7.6%	6.8%	11.6%	11.3%	16.3%
General secondary (10 years)	41.2%	30.2%	42.6%	42.0%	42.8%	50.0%	49.7%	53.6%
Secondary and preliminary professional education	22.8%	20.8%	27.2%	23.6%	28.4%	20.9%	21.0%	19.9%
Incomplete higher education	3.2%	4.3%	3.3%	3.7%	3.1%	2.2%	2.2%	2.2%
Higher education (Graduate)	21.4%	36.9%	17.7%	20.9%	16.6%	10.3%	10.6%	5.8%
Post-graduate, PhD, Doctoral	0.3%	0.8%	0.1%	0.2%	0.0%	0.1%	0.1%	0.0%
<b>TOTAL</b>	<b>100.0%</b>	<b>100.0%</b>	<b>100.0%</b>	<b>100.0%</b>	<b>100.0%</b>	<b>100.0%</b>	<b>100.0%</b>	<b>100.0%</b>

**Table 10: Educational level of people above 18 per Strata**

Level of education	Total	Yerevan	Other cities and towns	Large cities	Small and medium towns	Villages	Large and medium villages	Small villages
Elementary (up to 3 years)	100.0%	16.2%	21.8%	5.3%	16.5%	61.9%	60.2%	1.8%
Incomplete secondary (8 years)	100.0%	22.2%	25.8%	7.2%	18.6%	52.0%	47.2%	4.8%
General secondary (10 years)	100.0%	24.3%	31.1%	7.9%	23.2%	44.5%	41.4%	3.1%
Secondary and preliminary professional education	100.0%	30.4%	35.9%	8.0%	27.9%	33.7%	31.6%	2.1%
Incomplete higher education	100.0%	44.4%	30.8%	9.0%	21.8%	24.8%	23.2%	1.6%
Higher education (Graduate)	100.0%	57.4%	25.0%	7.6%	17.4%	17.6%	17.0%	0.7%
Post-graduate, PhD, Doctoral	100.0%	83.3%	8.3%	5.6%	2.8%	8.3%	8.3%	0.0%

**Table 11: Attendance of education institutions by children**

	Total	Yerevan	Other cities and towns	Large cities	Small and medium towns	Villages	Large and medium villages	Small villages
General education school	93.0%	90.6%	92.6%	92.2%	92.8%	94.8%	94.4%	100.0%
General Education schools, private	2.1%	3.9%	1.4%	1.3%	1.4%	1.5%	1.6%	0.0%
Extra private classes at school or with private teachers	1.8%	3.6%	1.4%	1.3%	1.4%	1.0%	1.0%	0.0%
Dancing, Arts, Musical or Sports schools	11.7%	22.8%	13.4%	20.1%	10.9%	4.1%	4.2%	1.7%
Schools for children with special needs	0.5%	0.0%	1.9%	0.6%	2.4%	0.0%	0.0%	0.0%
Orphanages and boarding schools	0.1%	0.0%	0.4%	1.3%	0.0%	0.1%	0.1%	0.0%
Colleges	0.0%	0.2%	0.0%	0.0%	0.0%	0.0%	0.0%	0.0%
Not attending any school or institution	1.5%	1.2%	1.9%	1.9%	1.9%	1.4%	1.5%	0.0%

**Table 12: Home computers**

	Total	Yerevan	Other cities and towns	Large cities	Small and medium towns	Villages	Large and medium villages	Small villages
No computer	91.9%	84.3%	95.6%	95.8%	95.5%	96.8%	96.6%	100.0%
Computer at home with no access to Internet	5.0%	9.0%	3.8%	3.5%	3.9%	1.8%	2.0%	0.0%
Computer with connection to Internet	3.0%	6.7%	0.6%	0.6%	0.6%	1.4%	1.5%	0.0%
<b>TOTAL</b>	<b>100.0%</b>	<b>100.0%</b>	<b>100.0%</b>	<b>100.0%</b>	<b>100.0%</b>	<b>100.0%</b>	<b>100.0%</b>	<b>100.0%</b>

**Table 13: Breakdown of the age group of 18-63 per type of employment**

Employment	Total	Yerevan	Other cities and towns	Large cities	Small and medium towns	Villages	Large and medium villages	Small villages
Small and large entrepreneurs	0.5%	1.1%	0.3%	0.1%	0.4%	0.2%	0.2%	0.0%
Self-employed or small entrepreneur	6.5%	6.5%	7.6%	9.2%	7.1%	5.5%	5.6%	4.0%
Employed in Agriculture	13.2%	0.3%	1.3%	0.7%	1.5%	35.8%	34.9%	47.3%
Paid employee	28.6%	35.9%	31.3%	24.9%	33.4%	19.4%	19.6%	17.0%
Entrepreneur abroad	0.4%	0.4%	0.6%	0.4%	0.6%	0.3%	0.3%	0.0%
Paid employment abroad	5.9%	3.0%	7.7%	12.4%	6.2%	7.1%	7.3%	4.9%
Not working and/or unemployed	36.7%	43.0%	43.9%	46.2%	43.1%	24.6%	24.9%	20.5%

**Table 14: Breakdown of the age group of 18-63 in Strata per type of employment**

Employment	Total	Yerevan	Other cities and towns	Large cities	Small and medium towns	Villages	Large and medium villages	Small villages
Small and large entrepreneurs	100.0%	68.6%	17.6%	2.0%	15.7%	13.7%	13.7%	0.0%
Self-employed or small entrepreneur	100.0%	33.3%	36.4%	10.9%	25.5%	30.3%	28.8%	1.5%
Employed in Agriculture	100.0%	0.6%	3.1%	0.4%	2.7%	96.3%	87.7%	8.6%
Paid employee	100.0%	41.7%	34.0%	6.7%	27.3%	24.2%	22.8%	1.4%
Entrepreneur abroad	100.0%	28.9%	44.7%	7.9%	36.8%	26.3%	26.3%	0.0%
Paid employment abroad	100.0%	16.8%	40.5%	16.1%	24.4%	42.7%	40.7%	2.0%
Not working and/or unemployed	100.0%	38.9%	37.1%	9.7%	27.4%	23.9%	22.6%	1.3%

## Section C. Healthcare

Table 15: Healthcare problems

	Total	Yerevan	Other cities and towns	Large cities	Small and medium towns	Villages	Large and medium villages	Small villages
Chronic patients and patients that need permanent medical treatment	26.50%	30.90%	21.70%	25.70%	20.30%	26.20%	25.20%	39.30%
Cases within the previous 1 year	60.10%	61.70%	56.80%	55.20%	57.30%	61.50%	61.20%	65.50%
Do seek medical assistance when sick	65.90%	67.80%	62.50%	61.50%	62.80%	66.90%	67.70%	56.40%
Do not seek medical assistance when sick	34.10%	32.20%	37.50%	38.50%	37.20%	33.10%	32.30%	43.60%
No serious illness or diseases	27.20%	18.90%	33.60%	28.40%	35.50%	29.80%	29.40%	33.30%
Home treatment	26.60%	27.00%	25.30%	26.90%	24.70%	27.50%	29.40%	8.30%
Do seek medical assistance when sick because of financial constraints	41.40%	50.40%	36.80%	35.80%	37.10%	36.50%	35.10%	50.00%
Do seek medical assistance when sick because of the distance to the hospital	1.50%	0.40%	0.80%	3.00%	0.00%	3.50%	3.50%	4.20%

Table 16: Households with healthcare problems broken down per Strata

	Total	Yerevan	Other cities and towns	Large cities	Small and medium towns	Villages	Large and medium villages	Small villages
Chronic patients and patients that need permanent medical treatment	100.0%	41.7%	25.6%	8.1%	17.6%	32.6%	29.3%	3.3%
Cases within the previous 1 year	100.0%	36.7%	29.5%	7.6%	21.9%	33.8%	31.3%	2.4%
Do seek medical assistance when sick	100.0%	37.8%	28.0%	7.1%	20.8%	34.3%	32.2%	2.1%
Do not seek medical assistance when sick	100.0%	34.7%	32.5%	8.6%	23.9%	32.8%	29.7%	3.1%
No serious illness or diseases	100.0%	24.1%	40.1%	9.0%	31.1%	35.8%	32.1%	3.8%
Home treatment	100.0%	35.3%	30.9%	8.7%	22.2%	33.8%	32.9%	1.0%
Do seek medical assistance when sick because of financial constraints	100.0%	42.2%	28.9%	7.5%	21.4%	28.9%	25.2%	3.7%
Do seek medical assistance when sick because of the distance to the hospital	100.0%	8.3%	16.7%	16.7%	0.0%	75.0%	66.7%	8.3%

## Section D. Housing conditions and communal services

Table 17: Possession/ownership of apartments by households

	Total	Yerevan	Other cities and towns	Large cities	Small and medium towns	Villages	Large and medium villages	Small villages
Live in own house/apartment	93.2%	92.6%	90.5%	92.3%	95.1%	95.2%	91.8%	95.1%
Rented house/apartment	2.5%	3.5%	3.8%	3.8%	0.3%	0.0%	3.8%	0.3%
Live in houses/apartments of friends or relatives with no rent	3.2%	3.3%	4.8%	1.9%	3.6%	3.6%	2.7%	3.6%
Other	1.1%	0.7%	1.0%	1.9%	0.9%	1.2%	1.7%	1.0%

Table 18: Possession/ownership of apartments by households, broken down per Strata

	Total	Yerevan	Other cities and towns	Large cities	Small and medium towns	Villages	Large and medium villages	Small villages
Live in own house/apartment	100.0%	35.5%	8.0%	22.7%	31.4%	2.3%	30.8%	33.7%
Rented house/apartment	100.0%	49.0%	12.5%	34.4%	4.2%	0.0%	46.9%	4.2%
Live in houses/apartments of friends or relatives with no rent	100.0%	36.9%	12.3%	13.9%	34.4%	2.5%	26.2%	36.9%
Other	100.0%	22.0%	7.3%	41.5%	26.8%	2.4%	48.8%	29.3%

**Table 19: Households with no communal services at home**

Facilities and services	Total	Yerevan	Other cities and towns	Large cities	Small and medium towns	Villages	Large and medium villages	Small villages
Kitchen	5.7%	1.5%	2.2%	0.0%	3.0%	13.6%	13.2%	19.0%
Toilette pit inside the house	29.2%	4.1%	5.7%	1.6%	7.2%	78.6%	77.9%	88.1%
Cold water tap in the house (connected to a centralized drinking water supply system)	14.1%	5.6%	3.9%	2.2%	4.5%	32.9%	32.8%	34.5%
Hot tap water	79.8%	58.8%	90.6%	91.4%	90.3%	92.5%	92.1%	97.6%
Natural gas	43.0%	50.6%	32.6%	23.2%	36.0%	44.7%	40.8%	98.8%
Heating (centralized)	97.7%	98.6%	96.0%	100.0%	94.5%	98.4%	98.3%	100.0%
Local individual heating system	96.3%	94.6%	97.1%	95.9%	97.5%	97.4%	97.5%	96.4%
Gas heater, manufactured	71.0%	77.3%	57.6%	47.3%	61.4%	76.9%	75.5%	96.4%
Telephone	25.6%	5.7%	28.9%	55.9%	19.2%	43.9%	43.2%	54.8%
Satellite	96.6%	97.1%	95.5%	94.9%	95.6%	97.2%	97.1%	98.8%
Air conditioner	97.3%	95.7%	98.5%	99.7%	98.1%	97.8%	97.7%	100.0%

**Table 20: Breakdown of households with no communal services at home**

Facilities and services	Total	Yerevan	Other cities and towns	Large cities	Small and medium towns	Villages	Large and medium villages	Small villages
Kitchen	100.0%	9.2%	12.0%	0.0%	12.0%	78.8%	71.4%	7.4%
Toilette pit inside the house	100.0%	5.0%	6.1%	0.5%	5.7%	88.8%	82.2%	6.7%
Cold water tap in the house (connected to a centralized drinking water supply system)	100.0%	14.2%	8.6%	1.3%	7.3%	77.2%	71.8%	5.4%
Hot tap water	100.0%	26.3%	35.4%	9.5%	25.9%	38.2%	35.5%	2.7%
Natural gas	100.0%	42.0%	23.7%	4.5%	19.2%	34.3%	29.2%	5.1%
Heating (centralized)	100.0%	36.1%	30.7%	8.5%	22.2%	33.2%	31.0%	2.3%
Local individual heating system	100.0%	35.1%	31.5%	8.3%	23.2%	33.4%	31.2%	2.2%
Gas heater, manufactured	100.0%	38.9%	25.3%	5.5%	19.8%	35.7%	32.7%	3.0%
Telephone	100.0%	8.0%	35.3%	18.1%	17.2%	56.7%	52.0%	4.7%
Satellite	100.0%	35.9%	30.9%	8.1%	22.7%	33.2%	30.9%	2.3%
Air conditioner	100.0%	35.2%	31.6%	8.5%	23.1%	33.2%	30.9%	2.3%

## Section E. Family Benefit System

**Table 21: Awareness of the Family Benefit System**

	Total	Yerevan	Other cities and towns	Large cities	Small and medium towns	Villages	Large and medium villages	Small villages
Not aware of	90.3%	82.0%	96.8%	98.4%	96.2%	93.3%	93.5%	90.5%
Aware of	9.7%	18.0%	3.2%	1.6%	3.8%	6.7%	6.5%	9.5%
<b>TOTAL</b>	<b>100.0%</b>	<b>100.0%</b>	<b>100.0%</b>	<b>100.0%</b>	<b>100.0%</b>	<b>100.0%</b>	<b>100.0%</b>	<b>100.0%</b>

**Table 22: Households registered in the Family Benefit System**

	Total	Yerevan	Other cities and towns	Large cities	Small and medium towns	Villages	Large and medium villages	Small villages
1 Registered in the Family Benefit System	64.0%	72.3%	56.1%	40.0%	61.9%	62.4%	63.4%	48.8%
2 Beneficiaries	15.1%	8.1%	21.4%	34.0%	16.9%	16.8%	16.4%	22.6%
3 Former Beneficiaries	11.4%	13.6%	11.6%	18.4%	9.2%	8.9%	8.6%	13.1%
4 Have received single-time financial assistance only	1.4%	1.0%	1.9%	0.0%	2.6%	1.5%	1.5%	1.2%
5 Registered, but never received any social transfer	8.0%	5.1%	8.9%	7.6%	9.4%	10.3%	10.0%	14.3%
<b>TOTAL</b>	<b>100.0%</b>	<b>100.0%</b>	<b>100.0%</b>	<b>100.0%</b>	<b>100.0%</b>	<b>100.0%</b>	<b>100.0%</b>	<b>100.0%</b>

**Table 23: Breakdown of households registered in the Family Benefit System per Strata**

	Total	Yerevan	Other cities and towns	Large cities	Small and medium towns	Villages	Large and medium villages	Small villages
1 Registered in the Family Benefit System	100.0%	40.4%	27.4%	5.2%	22.2%	32.2%	30.5%	1.7%
2 Beneficiaries	100.0%	19.1%	44.2%	18.6%	25.6%	36.7%	33.4%	3.3%
3 Former Beneficiaries	100.0%	42.5%	31.7%	13.3%	18.4%	25.7%	23.2%	2.5%
4 Have received single-time financial assistance only	100.0%	23.6%	41.8%	0.0%	41.8%	34.5%	32.7%	1.8%
5 Registered, but never received any social transfer	100.0%	22.7%	34.9%	7.9%	27.0%	42.4%	38.5%	3.9%

**Table 24: Reasons for not applying for the Family Benefit**

	Total	Yerevan	Other cities and towns	Large cities	Small and medium towns	Villages	Large and medium villages	Small villages
1 Have not considered themselves poor	47.2%	55.5%	43.4%	30.4%	46.4%	40.1%	41.1%	22.0%
2 Not aware of	4.0%	6.4%	1.7%	0.0%	2.0%	2.8%	3.0%	0.0%
3 Believe that the selection of beneficiaries is not fair	18.8%	17.0%	20.0%	26.4%	18.6%	20.1%	19.6%	29.3%
4 Have not applied for because of improper treatment by social service employees	2.3%	1.7%	2.4%	1.6%	2.6%	2.9%	2.6%	9.8%
5 Have not applied for because of difficulties in obtaining the necessary documents	5.4%	7.8%	4.1%	5.6%	3.7%	3.5%	3.5%	2.4%
6 Have not applied, other reasons	22.3%	11.5%	28.5%	36.0%	26.7%	30.5%	30.2%	36.6%
<b>TOTAL</b>	<b>100.0%</b>	<b>100.0%</b>	<b>100.0%</b>	<b>100.0%</b>	<b>100.0%</b>	<b>100.0%</b>	<b>100.0%</b>	<b>100.0%</b>

**Table 25: Notification on grounds for rejection of the Family benefit**

		Total	Yerevan	Other cities and towns	Large cities	Small and medium towns	Villages	Large and medium villages	Small villages
1	Notified verbally	85.1%	80.5%	88.5%	87.7%	88.9%	86.4%	86.4%	87.0%
2	Notified in writing	1.9%	2.8%	1.2%	1.2%	1.2%	1.7%	1.9%	0.0%
3	Not notified	13.0%	16.7%	10.3%	11.1%	9.9%	11.9%	11.7%	13.0%
<b>TOTAL</b>		<b>100.0%</b>	<b>100.0%</b>	<b>100.0%</b>	<b>100.0%</b>	<b>100.0%</b>	<b>100.0%</b>	<b>100.0%</b>	<b>100.0%</b>

**Table 26: Perception of the grounds for rejection by households**

		Total	Yerevan	Other cities and towns	Large cities	Small and medium towns	Villages	Large and medium villages	Small villages
1	Was understandable	53.2%	59.8%	55.5%	45.6%	62.5%	39.6%	40.0%	36.4%
2	Was not understandable	31.7%	26.6%	29.2%	36.8%	23.8%	43.2%	43.0%	45.5%
3	Difficult to answer	15.0%	13.6%	15.3%	17.5%	13.8%	17.1%	17.0%	18.2%
<b>TOTAL</b>		<b>100.0%</b>	<b>100.0%</b>	<b>100.0%</b>	<b>100.0%</b>	<b>100.0%</b>	<b>100.0%</b>	<b>100.0%</b>	<b>100.0%</b>

**Table 27: Collection of necessary documentation for the Family Benefit System**

		Total	Yerevan	Other cities and towns	Large cities	Small and medium towns	Villages	Large and medium villages	Small villages
1	Easy	65.3%	56.8%	65.2%	67.4%	63.9%	72.3%	71.1%	83.7%
2	Difficult	34.7%	43.2%	34.8%	32.6%	36.1%	27.7%	28.9%	16.3%

**Table 28: Evaluation of the Social inspectors' performance**

		Total	Yerevan	Other cities and towns	Large cities	Small and medium towns	Villages	Large and medium villages	Small villages
1	Satisfactory	62.5%	63.4%	61.1%	55.7%	64.4%	63.3%	64.1%	56.1%
2	Not satisfactory	14.8%	13.9%	17.0%	16.5%	17.3%	12.9%	13.0%	12.2%
3	Difficult to answer	22.8%	22.7%	21.9%	27.8%	18.3%	23.8%	23.0%	31.7%

**Table 29: Assessment of system fairness**

		Total	Yerevan	Other cities and towns	Large cities	Small and medium towns	Villages	Large and medium villages	Small villages
1	Fair	30.5%	31.6%	26.9%	10.3%	32.9%	32.7%	31.8%	45.8%
2	Unfair	29.1%	26.3%	35.6%	67.6%	24.0%	25.9%	25.7%	27.8%
3	Difficult to answer	40.4%	42.1%	37.5%	22.1%	43.1%	41.4%	42.5%	26.4%

**Table 30: Assessment of "real" poverty of beneficiaries**

		Total	Yerevan	Other cities and towns	Large cities	Small and medium towns	Villages	Large and medium villages	Small villages
1	Almost all are poor	14.2%	8.7%	14.5%	7.6%	17.0%	19.8%	18.8%	33.7%
2	More than half is poor	24.5%	23.1%	25.3%	26.1%	25.0%	25.2%	25.2%	25.3%
3	Half is poor	17.3%	18.3%	20.3%	30.9%	16.5%	13.3%	13.3%	14.5%
4	Less than half is poor	11.0%	11.9%	10.7%	14.0%	9.5%	10.1%	10.6%	3.6%
5	Small portion is poor	5.9%	6.1%	5.1%	3.8%	5.6%	6.5%	6.3%	8.4%
6	Difficult to answer	27.1%	31.8%	24.0%	17.5%	26.4%	25.0%	25.7%	14.5%
<b>TOTAL</b>		<b>100.0%</b>	<b>100.0%</b>	<b>100.0%</b>	<b>100.0%</b>	<b>100.0%</b>	<b>100.0%</b>	<b>100.0%</b>	<b>100.0%</b>

## Section F. Agriculture

Table 31: Households that own land plot, orchard or and other agricultural land

	Total	Yerevan	Other cities and towns	Large cities	Small and medium towns	Villages	Large and medium villages	Small villages
Yes	37.7%	7.7%	14.9%	1.0%	20.0%	91.6%	91.8%	89.3%
No	62.3%	92.3%	85.1%	99.0%	80.0%	8.4%	8.2%	10.7%
<b>TOTAL</b>	<b>100.0%</b>	<b>100.0%</b>	<b>100.0%</b>	<b>100.0%</b>	<b>100.0%</b>	<b>100.0%</b>	<b>100.0%</b>	<b>100.0%</b>

Table 32: Households that own land plot, orchard or and other agricultural land, breakdown per Strata

	Total	Yerevan	Other cities and towns	Large cities	Small and medium towns	Villages	Large and medium villages	Small villages
Yes	100.0%	7.3%	12.4%	0.2%	12.2%	80.3%	75.1%	5.3%
No	100.0%	52.7%	42.8%	13.2%	29.6%	4.5%	4.1%	0.4%
<b>TOTAL</b>	<b>100.0%</b>	<b>35.6%</b>	<b>31.3%</b>	<b>8.3%</b>	<b>23.0%</b>	<b>33.1%</b>	<b>30.9%</b>	<b>2.2%</b>

Table 33: Types of land and other specific parameters (as determined in the scale below)

Average estimates	Total	Yerevan	Large cities	Small and medium towns	Large and medium villages	Small villages
<b>Tillage</b>						
Surface area	2.3	2.1	4.0	1.7	2.3	3.5
Number of separate land lots	1.6	1.3	2.0	1.2	1.6	2.1
Irrigated area, share	2.7	2.8	4.0	2.7	2.8	1.8
<b>Orchard</b>						
Surface area	1.6	1.8	1.0	1.3	1.7	1.2
Number of separate land lots	1.2	1.0	1.0	1.0	1.3	1.1
Irrigated area, share	3.3	2.6	1.0	3.4	3.4	3.3
<b>Pastures</b>						
Surface area	2.7	2.5	5.0	2.0	2.5	3.8
Number of separate land lots	1.5	1.0	4.0	1.0	1.3	2.2
Irrigated area, share	2.3	1.8	1.0	4.0	2.4	2.5
<b>Hayfields</b>						
Surface area	2.8	-	-	2.1	2.8	3.6
Number of separate land lots	1.5	-	-	1.6	1.4	2.0
Irrigated area, share	1.4	-	-	1.4	1.4	1.2
<b>Evaluation scale</b>						
Surface area	Number of land individual (separate) plots		Irrigated part			
1. less than 0.2 ha	1. One		1. A small share is irrigated (0-25%)			
2. 0.2 - 0.5 ha	2. Two		2. Less than half (25-50%)			
3. 0.5 - 1.0 ha	3. Three		3. More than half (50-75%)			
4. 1 - 2 ha	4. Four and more		4. Most part (75%-100%)			
5. more than 2 ha						

Table 34: Use of land lots

	Total	Yerevan	Other cities and towns	Large cities	Small and medium towns	Villages	Large and medium villages	Small villages
Use entirely	57.3%	27.7%	43.6%	0.0%	44.1%	61.9%	62.4%	54.7%
Use partially	23.9%	34.0%	19.2%	50.0%	18.8%	23.7%	23.6%	25.3%
Do not use	18.8%	38.3%	37.2%	50.0%	37.1%	14.4%	14.0%	20.0%
<b>TOTAL</b>	<b>100.0%</b>	<b>100.0%</b>	<b>100.0%</b>	<b>100.0%</b>	<b>100.0%</b>	<b>100.0%</b>	<b>100.0%</b>	<b>100.0%</b>

**Table 35: Main reasons for not using land**

Reasons	Total	Yerevan	Other cities and towns	Large cities	Small and medium towns	Villages	Large and medium villages	Small villages
No financial resources	26.9%	33.3%	10.9%	0.0%	11.1%	31.7%	30.2%	46.7%
No quality seeds	2.7%	0.0%	0.0%	0.0%	0.0%	4.3%	4.0%	6.7%
Not capable physically	21.2%	8.3%	18.8%	0.0%	19.0%	25.0%	24.2%	33.3%
Too far from the community	8.0%	16.7%	12.5%	100.0%	11.1%	4.3%	4.7%	0.0%
Low quality soil	14.4%	16.7%	15.6%	0.0%	15.9%	13.4%	14.8%	0.0%
No time	8.0%	8.3%	14.1%	0.0%	14.3%	5.5%	6.0%	0.0%
Other	18.9%	16.7%	28.1%	0.0%	28.6%	15.9%	16.1%	13.3%
<b>TOTAL</b>	<b>100.0%</b>	<b>100.0%</b>	<b>100.0%</b>	<b>100.0%</b>	<b>100.0%</b>	<b>100.0%</b>	<b>100.0%</b>	<b>100.0%</b>

**Table 36: Possession of livestock in rural areas**

	Small and medium towns	Villages	Large and medium villages	Small villages
Yes	6.1%	67.3%	66.2%	82.1%
No	93.9%	32.7%	33.8%	17.9%
<b>TOTAL</b>	<b>100.0%</b>	<b>100.0%</b>	<b>100.0%</b>	<b>100.0%</b>

**Table 37: Main types of livestock in rural areas**

	Villages	Large and medium villages	Small villages
Cattle (cows, horses, donkeys, etc)	71.5%	69.3%	97.1%
Sheep and goats	18.9%	14.9%	63.8%
Pigs	29.5%	28.3%	43.5%
Chicken, turkey, etc	71.7%	71.9%	69.6%
Bees	6.9%	5.7%	20.3%

## Annex 2. Statistical Data on Beneficiary Families

### Table of Contents

Section A. Main Demographic Picture.....	30
Table 38. Breakdown of households per number of members.....	30
Table 39. Breakdown of households per Strata according to the size.....	30
Table 40. Age breakdown of population.....	30
Table 41. Age breakdown of population per Strata.....	30
Table 42. Age breakdown of male and female population.....	31
Table 43. Age and Sex breakdown of population.....	31
Table 44. Share of population of social groups in total population.....	31
Table 45. Breakdown of population in social groups per Strata.....	32
Section B. Education and Employment.....	32
Table 46. Educational level of people above 18.....	32
Table 47. Educational level of people above 18 per Strata.....	32
Table 48. Attendance of education institutions by children of 7-15 years.....	33
Table 49. Home computers.....	33
Table 50. Breakdown of the age group of 18-63 per type of employment.....	33
Table 51. Breakdown of the age group of 18-63 in Strata per type of employment.....	33
Section C. Healthcare.....	34
Table 52. Healthcare problems.....	34
Table 53. Households with healthcare problems broken down per Strata.....	34
Section D. Housing conditions and communal services.....	35
Table 54. Possession/ownership of apartments by households.....	35
Table 55. Possession/ownership of apartments by households, broken down per Strata.....	35
Table 56. Households with no communal services at home.....	35
Table 57. Breakdown of households with no communal services at home.....	35
Section E. Family Benefit System.....	36
Table 58. Collection of necessary documentation for the Family benefit system.....	36
Table 59. Evaluation of the Social inspectors' performance.....	36
Table 60. Assessment of system fairness.....	36
Table 61. Assessment of "real" poverty of beneficiaries.....	36
Section F. Agriculture.....	37
Table 62. Households that own land plot, orchard or and other agricultural land.....	37
Table 63. Households that own land plot, orchard or and other agricultural land, breakdown per Strata.....	37
Table 64. Types of land and other specific parameters (as determined in the scale below).....	37
Table 65. Use of land lots.....	37
Table 66. Main reasons for not using land.....	38
Table 67. Possession of livestock in rural areas.....	38
Table 68. Main types of livestock in rural areas.....	38

## Section A. Main Demographic Picture

Table 38: Breakdown of households per number of members

Number of members	Total	Yerevan	Other cities and towns	Large cities	Small and medium towns	Villages	Large and medium villages	Small villages
1 member	20%	31%	21%	24%	19%	13%	14%	8%
2 members	13%	15%	11%	12%	9%	14%	13%	21%
3 members	10%	14%	12%	13%	12%	5%	6%	0%
4 members	15%	12%	22%	17%	26%	9%	8%	13%
5 members	18%	11%	17%	16%	17%	23%	24%	17%
6 members	13%	9%	12%	11%	13%	17%	15%	33%
7 and more members	11%	8%	6%	8%	5%	19%	20%	8%
<b>TOTAL</b>	<b>100%</b>	<b>100%</b>	<b>100%</b>	<b>100%</b>	<b>100%</b>	<b>100%</b>	<b>100%</b>	<b>100%</b>

Table 39: Breakdown of households per Strata according to the size

Number of members	Total	Yerevan	Other cities and towns	Large cities	Small and medium towns	Villages	Large and medium villages	Small villages
1 member	100%	30%	48%	23%	24%	23%	21%	1%
2 members	100%	24%	38%	19%	19%	38%	33%	6%
3 members	100%	27%	55%	25%	30%	18%	18%	0%
4 members	100%	15%	65%	21%	44%	20%	17%	3%
5 members	100%	12%	43%	18%	25%	45%	42%	3%
6 members	100%	13%	42%	16%	25%	45%	36%	9%
7 and more members	100%	14%	26%	14%	12%	60%	57%	3%

Table 40: Age breakdown of population

Age groups	Total	Yerevan	Other cities and towns	Large cities	Small and medium towns	Villages	Large and medium villages	Small villages
0-2 years	3.1%	3.2%	2.6%	1.4%	3.5%	3.5%	3.2%	6.6%
3-5 years	5.7%	5.4%	5.8%	4.4%	6.8%	5.7%	5.8%	4.7%
6-17 years	28.0%	21.2%	25.7%	24.1%	26.8%	33.2%	33.4%	31.1%
18-47 years	38.0%	39.2%	38.3%	35.7%	40.2%	37.2%	37.5%	34.0%
48-63 years	10.0%	12.4%	12.6%	14.3%	11.3%	6.3%	6.2%	6.6%
64-74 years	9.9%	13.3%	9.4%	12.2%	7.4%	9.1%	8.9%	11.3%
75 years and above	5.3%	5.4%	5.6%	7.8%	4.0%	5.0%	5.0%	5.7%
<b>TOTAL</b>	<b>100.0%</b>	<b>100.0%</b>	<b>100.0%</b>	<b>100.0%</b>	<b>100.0%</b>	<b>100.0%</b>	<b>100.0%</b>	<b>100.0%</b>

Table 41: Age breakdown of population per Strata

Age groups	Total	Yerevan	Other cities and towns	Large cities	Small and medium towns	Villages	Large and medium villages	Small villages
0-2 years	100.0%	16.7%	36.9%	8.3%	28.6%	46.4%	38.1%	8.3%
3-5 years	100.0%	15.4%	43.6%	14.1%	29.5%	41.0%	37.8%	3.2%
6-17 years	100.0%	12.3%	39.4%	15.7%	23.8%	48.3%	44.0%	4.3%
18-47 years	100.0%	16.7%	43.4%	17.1%	26.3%	39.9%	36.4%	3.5%
48-63 years	100.0%	20.1%	54.2%	26.0%	28.2%	25.6%	23.1%	2.6%
64-74 years	100.0%	21.7%	40.8%	22.4%	18.4%	37.5%	33.1%	4.4%
75 years and above	100.0%	16.4%	45.2%	26.7%	18.5%	38.4%	34.2%	4.1%

**Table 42: Age breakdown of male and female population**

Age group per sexes	Total	Yerevan	Other cities and towns	Large cities	Small and medium towns	Villages	Large and medium villages	Small villages
<b>Male</b>	<b>100.0%</b>	<b>100.0%</b>	<b>100.0%</b>	<b>100.0%</b>	<b>100.0%</b>	<b>100.0%</b>	<b>100.0%</b>	<b>100.0%</b>
0-17 years	41.4%	31.8%	38.8%	35.5%	41.2%	47.3%	47.1%	49.1%
18-47 years	38.2%	42.0%	37.1%	34.6%	38.8%	38.0%	38.4%	34.5%
48-63 years	9.0%	11.4%	12.9%	16.6%	10.3%	4.4%	4.2%	5.5%
64 years and above	11.3%	14.8%	11.2%	13.3%	9.6%	10.3%	10.2%	10.9%
<b>Female</b>	<b>100.0%</b>	<b>100.0%</b>	<b>100.0%</b>	<b>100.0%</b>	<b>100.0%</b>	<b>100.0%</b>	<b>100.0%</b>	<b>100.0%</b>
0-17 years	33.2%	28.4%	30.5%	25.8%	34.0%	38.3%	38.6%	35.3%
18-47 years	37.8%	37.3%	39.3%	36.6%	41.2%	36.5%	36.8%	33.3%
48-63 years	10.7%	13.1%	12.3%	12.5%	12.1%	7.9%	7.9%	7.8%
64 years and above	18.3%	21.3%	17.9%	25.1%	12.6%	17.3%	16.8%	23.5%

**Table 43: Age and Sex breakdown of population**

Age group per sexes	Total	Yerevan	Other cities and towns	Large cities	Small and medium towns	Villages	Large and medium villages	Small villages
<b>Male</b>	<b>43.2%</b>	<b>39.6%</b>	<b>42.7%</b>	<b>42.4%</b>	<b>42.9%</b>	<b>45.3%</b>	<b>44.6%</b>	<b>51.9%</b>
0-17 years	17.9%	12.6%	16.6%	15.1%	17.7%	21.4%	21.0%	25.5%
18-47 years	16.5%	16.7%	15.8%	14.7%	16.6%	17.2%	17.1%	17.9%
48-63 years	3.9%	4.5%	5.5%	7.0%	4.4%	2.0%	1.9%	2.8%
64 years and above	4.9%	5.9%	4.8%	5.6%	4.1%	4.7%	4.6%	5.7%
<b>Female</b>	<b>56.8%</b>	<b>60.4%</b>	<b>57.3%</b>	<b>57.6%</b>	<b>57.1%</b>	<b>54.7%</b>	<b>55.4%</b>	<b>48.1%</b>
0-17 years	18.9%	17.1%	17.5%	14.9%	19.4%	21.0%	21.4%	17.0%
18-47 years	21.5%	22.5%	22.5%	21.1%	23.6%	20.0%	20.4%	16.0%
48-63 years	6.1%	7.9%	7.1%	7.2%	6.9%	4.3%	4.4%	3.8%
64 years and above	10.4%	12.8%	10.3%	14.5%	7.2%	9.5%	9.3%	11.3%

**Table 44: Share of population of social groups in total population**

Social groups	Total	Yerevan	Other cities and towns	Large cities	Small and medium towns	Villages	Large and medium villages	Small villages
<b>Age pensioners</b>	<b>13.2%</b>	<b>16.2%</b>	<b>12.8%</b>	<b>15.3%</b>	<b>11.0%</b>	<b>12.5%</b>	<b>12.1%</b>	<b>16.0%</b>
Single age pensioner	2.9%	4.1%	2.8%	3.6%	2.2%	2.5%	2.7%	0.9%
Disability, group I	1.7%	2.7%	1.7%	1.8%	1.6%	1.3%	1.5%	0.0%
Disability, group II	5.2%	5.6%	6.8%	6.2%	7.2%	3.3%	3.2%	4.7%
Disability, group III	1.4%	2.0%	1.6%	0.4%	2.5%	0.9%	1.0%	0.0%
Handicapped children	0.8%	0.9%	0.8%	0.4%	1.2%	0.7%	0.8%	0.0%
Pregnant women (20 months and more)	0.1%	0.2%	0.2%	0.2%	0.1%	0.1%	0.1%	0.0%
Children with one parent (up to the age of 21)	4.0%	5.4%	4.4%	3.6%	5.0%	3.0%	3.2%	1.9%
Children with no parents (up to the age of 21)	0.0%	0.0%	0.0%	0.0%	0.0%	0.0%	0.0%	0.0%
Child of divorced parents or of a single mother	1.8%	5.0%	1.5%	1.2%	1.8%	0.7%	0.8%	0.0%

**Table 45: Breakdown of population in social groups per Strata**

Social groups	Total	Yerevan	Other cities and towns	Large cities	Small and medium towns	Villages	Large and medium villages	Small villages
Age pensioners	100.0%	19.9%	41.7%	21.0%	20.7%	38.4%	33.7%	4.7%
Single age pensioner	100.0%	22.8%	41.8%	22.8%	19.0%	35.4%	34.2%	1.3%
Disability, group I	100.0%	25.5%	42.6%	19.1%	23.4%	31.9%	31.9%	0.0%
Disability, group II	100.0%	17.6%	56.3%	21.8%	34.5%	26.1%	22.5%	3.5%
Disability, group III	100.0%	23.7%	50.0%	5.3%	44.7%	26.3%	26.3%	0.0%
Handicapped children	100.0%	18.2%	45.5%	9.1%	36.4%	36.4%	36.4%	0.0%
Pregnant women (20 months and more)	100.0%	25.0%	50.0%	25.0%	25.0%	25.0%	25.0%	0.0%
Children with one parent (up to the age of 21)	100.0%	21.8%	47.3%	16.4%	30.9%	30.9%	29.1%	1.8%
Children with no parents (up to the age of 21)	0.0%	0.0%	0.0%	0.0%	0.0%	0.0%	0.0%	0.0%
Child of divorced parents or of a single mother	100.0%	45.8%	37.5%	12.5%	25.0%	16.7%	16.7%	0.0%

## Section B. Education and Employment

**Table 46: Educational level of people above 18**

Level of education	Total	Yerevan	Other cities and towns	Large cities	Small and medium towns	Villages	Large and medium villages	Small villages
1. Elementary (up to 3 years)	6.2%	3.6%	4.8%	4.5%	5.0%	9.1%	9.2%	8.3%
2. Incomplete secondary (8 years)	13.7%	14.4%	11.0%	10.8%	11.1%	16.6%	15.9%	23.3%
3. General secondary (10 years)	49.0%	39.9%	48.0%	47.3%	48.5%	54.7%	55.9%	43.3%
4. Secondary and preliminary professional education	19.0%	19.6%	22.7%	19.8%	25.1%	14.4%	14.1%	16.7%
5. Incomplete higher education	2.1%	4.2%	1.7%	2.1%	1.4%	1.4%	1.4%	1.7%
6. Higher education (Graduate)	9.9%	17.6%	11.9%	15.6%	9.0%	3.8%	3.5%	6.7%
7. Post-graduate, PhD, Doctoral	0.1%	0.7%	0.0%	0.0%	0.0%	0.0%	0.0%	0.0%
<b>TOTAL</b>	<b>100.0%</b>	<b>100.0%</b>	<b>100.0%</b>	<b>100.0%</b>	<b>100.0%</b>	<b>100.0%</b>	<b>100.0%</b>	<b>100.0%</b>

**Table 47: Educational level of people above 18 per Strata**

Level of education	Total	Yerevan	Other cities and towns	Large cities	Small and medium towns	Villages	Large and medium villages	Small villages
1. Elementary (up to 3 years)	100.0%	10.5%	34.3%	14.3%	20.0%	55.2%	50.5%	4.8%
2. Incomplete secondary (8 years)	100.0%	19.0%	35.8%	15.5%	20.3%	45.3%	39.2%	6.0%
3. General secondary (10 years)	100.0%	14.7%	43.6%	19.0%	24.6%	41.7%	38.6%	3.1%
4. Secondary and preliminary professional education	100.0%	18.6%	53.3%	20.4%	32.8%	28.2%	25.1%	3.1%
5. Incomplete higher education	100.0%	37.1%	37.1%	20.0%	17.1%	25.7%	22.9%	2.9%
6. Higher education (Graduate)	100.0%	32.1%	53.6%	31.0%	22.6%	14.3%	11.9%	2.4%
7. Post-graduate, PhD, Doctoral	100.0%	100.0%	0.0%	0.0%	0.0%	0.0%	0.0%	0.0%
<b>TOTAL</b>								

**Table 48: Attendance of education institutions by children of 7-15 years**

Educational Institutions	Total	Yerevan	Other cities and towns	Large cities	Small and medium towns	Villages	Large and medium villages	Small villages
General education school	93.3%	93.8%	92.0%	90.5%	92.9%	94.3%	93.6%	100.0%
General Education schools, private	1.2%	0.0%	0.9%	0.0%	1.4%	1.7%	1.9%	0.0%
Extra private classes at school or with private teachers	0.7%	3.1%	0.9%	0.0%	1.4%	0.0%	0.0%	0.0%
Dancing, Arts, Musical or Sports schools	6.3%	12.3%	10.7%	15.5%	7.9%	1.7%	1.9%	0.0%
Schools for children with special needs	0.5%	0.0%	0.4%	1.2%	0.0%	0.7%	0.7%	0.0%
Orphanages and boarding schools	0.5%	1.5%	0.9%	1.2%	0.7%	0.0%	0.0%	0.0%
Colleges	0.2%	0.0%	0.0%	0.0%	0.0%	0.3%	0.4%	0.0%
Not attending any school or institution	3.2%	4.6%	4.0%	6.0%	2.9%	2.4%	2.6%	0.0%

**Table 49: Home computers**

	Total	Yerevan	Other cities and towns	Large cities	Small and medium towns	Villages	Large and medium villages	Small villages
No computer	97.3%	96.3%	97.2%	96.4%	97.8%	97.9%	97.7%	100.0%
Computer at home with no access to Internet	1.3%	1.5%	1.9%	1.4%	2.2%	0.4%	0.5%	0.0%
Computer with connection to Internet	1.4%	2.2%	0.9%	2.2%	0.0%	1.7%	1.8%	0.0%
<b>TOTAL</b>	<b>100.0%</b>	<b>100.0%</b>	<b>100.0%</b>	<b>100.0%</b>	<b>100.0%</b>	<b>100.0%</b>	<b>100.0%</b>	<b>100.0%</b>

**Table 50: Breakdown of the age group of 18-63 per type of employment**

Employment	Total	Yerevan	Other cities and towns	Large cities	Small and medium towns	Villages	Large and medium villages	Small villages
Small and large entrepreneurs	0.0%	0.0%	0.0%	0.0%	0.0%	0.0%	0.0%	0.0%
Self-employed or small entrepreneur	6.9%	9.5%	8.7%	13.3%	5.4%	3.6%	4.0%	0.0%
Employed in Agriculture	16.1%	1.4%	0.5%	0.0%	0.9%	41.6%	40.2%	55.8%
Paid employee	14.1%	14.5%	16.3%	14.6%	17.5%	11.4%	11.6%	9.3%
Entrepreneur abroad	0.2%	0.0%	0.5%	0.0%	0.9%	0.0%	0.0%	0.0%
Paid employment abroad	3.4%	1.8%	4.4%	6.9%	2.7%	3.0%	3.0%	2.3%
Not working and/or unemployed	53.5%	65.2%	64.0%	60.9%	66.2%	35.5%	36.0%	30.2%

**Table 51: Breakdown of the age group of 18-63 in Strata per type of employment**

Employment	Total	Yerevan	Other cities and towns	Large cities	Small and medium towns	Villages	Large and medium villages	Small villages
Small and large entrepreneurs	0.0%	0.0%	0.0%	0.0%	0.0%	0.0%	0.0%	0.0%
Self-employed or small entrepreneur	100.0%	24.1%	56.3%	35.6%	20.7%	19.5%	19.5%	0.0%
Employed in Agriculture	100.0%	1.5%	1.5%	0.0%	1.5%	97.0%	85.2%	11.8%
Paid employee	100.0%	18.0%	51.7%	19.1%	32.6%	30.3%	28.1%	2.2%
Entrepreneur abroad	100.0%	0.0%	100.0%	0.0%	100.0%	0.0%	0.0%	0.0%
Paid employment abroad	100.0%	9.3%	58.1%	37.2%	20.9%	32.6%	30.2%	2.3%
Not working and/or unemployed	100.0%	21.4%	53.6%	21.1%	32.5%	25.0%	23.0%	1.9%

## Section C. Healthcare

Table 52: Healthcare problems

	Total	Yerevan	Other cities and towns	Large cities	Small and medium towns	Villages	Large and medium villages	Small villages
Chronic patients and patients that need permanent medical treatment	29.1%	41.2%	27.7%	35.3%	22.0%	24.3%	22.8%	37.5%
Cases within the previous 1 year	66.0%	66.9%	67.3%	71.9%	63.7%	63.8%	64.8%	54.2%
Do seek medical assistance when sick	40.9%	47.1%	40.8%	39.6%	41.8%	37.4%	37.9%	33.3%
Do not seek medical assistance when sick	25.1%	19.9%	26.5%	32.4%	22.0%	26.3%	26.9%	20.8%
No serious illness or diseases	6.6%	2.2%	8.1%	9.4%	7.1%	7.0%	6.8%	8.3%
Home treatment	5.1%	4.4%	5.3%	7.9%	3.3%	5.3%	5.9%	0.0%
Do seek medical assistance when sick because of financial constraints	12.3%	12.5%	12.8%	15.1%	11.0%	11.5%	12.8%	0.0%
Do seek medical assistance when sick because of the distance to the hospital	0.1%	0.0%	0.0%	0.0%	0.0%	0.4%	0.5%	0.0%

Table 53: Households with healthcare problems broken down per Strata

	Total	Yerevan	Other cities and towns	Large cities	Small and medium towns	Villages	Large and medium villages	Small villages
Chronic patients and patients that need permanent medical treatment	100.0%	27.5%	43.6%	24.0%	19.6%	28.9%	24.5%	4.4%
Cases within the previous 1 year	100.0%	19.7%	46.8%	21.6%	25.1%	33.5%	30.7%	2.8%
Do seek medical assistance when sick	100.0%	22.4%	45.8%	19.2%	26.6%	31.8%	29.0%	2.8%
Do not seek medical assistance when sick	100.0%	15.3%	48.3%	25.6%	22.7%	36.4%	33.5%	2.8%
No serious illness or diseases	100.0%	6.5%	56.5%	28.3%	28.3%	37.0%	32.6%	4.3%
Home treatment	100.0%	16.7%	47.2%	30.6%	16.7%	36.1%	36.1%	0.0%
Do seek medical assistance when sick because of financial constraints	100.0%	19.8%	47.7%	24.4%	23.3%	32.6%	32.6%	0.0%
Do seek medical assistance when sick because of the distance to the hospital	100.0%	0.0%	0.0%	0.0%	0.0%	100.0%	100.0%	0.0%

## Section D. Housing conditions and communal services

Table 54: Possession/ownership of apartments by households

	Total	Yerevan	Other cities and towns	Large cities	Small and medium towns	Villages	Large and medium villages	Small villages
Live in own house/apartment	87.1%	89.7%	87.5%	91.4%	84.6%	85.2%	85.4%	83.3%
Rented house/apartment	3.0%	1.5%	4.7%	0.0%	8.2%	1.6%	1.4%	4.2%
Live in houses/apartments of friends or relatives with no rent	7.4%	3.7%	6.9%	7.9%	6.0%	10.3%	10.0%	12.5%
Other	2.4%	5.1%	0.9%	0.7%	1.1%	2.9%	3.2%	0.0%

Table 55: Possession / ownership of apartments by households, broken down per Strata

	Total	Yerevan	Other cities and towns	Large cities	Small and medium towns	Villages	Large and medium villages	Small villages
Live in own house/apartment	100.0%	20.0%	46.1%	20.8%	25.2%	33.9%	30.7%	3.3%
Rented house/apartment	100.0%	9.5%	71.4%	0.0%	71.4%	19.0%	14.3%	4.8%
Live in houses/apartments of friends or relatives with no rent	100.0%	9.6%	42.3%	21.2%	21.2%	48.1%	42.3%	5.8%
Other	100.0%	41.2%	17.6%	5.9%	11.8%	41.2%	41.2%	0.0%

Table 56: Households with no communal services at home

Facilities and services	Total	Yerevan	Other cities and towns	Large cities	Small and medium towns	Villages	Large and medium villages	Small villages
Kitchen	12.7%	11.0%	1.9%	1.4%	2.2%	28.0%	27.4%	33.3%
Toilette pit inside the house	32.3%	8.8%	2.5%	2.9%	2.2%	84.8%	84.0%	91.7%
Cold water tap in the house (connected to a centralized drinking water supply system)	20.7%	5.9%	10.6%	10.8%	10.4%	42.4%	42.9%	37.5%
Hot tap water	93.6%	81.6%	94.7%	92.8%	96.2%	98.8%	98.6%	100.0%
Natural gas	46.7%	65.4%	36.4%	26.6%	44.0%	49.8%	44.3%	100.0%
Heating (centralized)	98.4%	100.0%	96.6%	98.6%	95.1%	100.0%	100.0%	100.0%
Local individual heating system	96.7%	98.5%	95.0%	89.2%	99.5%	97.9%	97.7%	100.0%
Gas heater, manufactured	79.6%	84.6%	71.0%	56.8%	81.9%	88.1%	87.2%	95.8%
Telephone	51.3%	16.2%	47.0%	74.8%	25.8%	76.5%	75.3%	87.5%
Satellite	98.0%	98.5%	97.8%	97.8%	97.8%	97.9%	98.6%	91.7%
Air conditioner	98.9%	99.3%	98.4%	98.6%	98.4%	99.2%	99.1%	100.0%

Table 57: Breakdown of households with no communal services at home

Facilities and services	Total	Yerevan	Other cities and towns	Large cities	Small and medium towns	Villages	Large and medium villages	Small villages
Kitchen	100.0%	16.9%	6.7%	2.2%	4.5%	76.4%	67.4%	9.0%
Toilette pit inside the house	100.0%	5.3%	3.5%	1.8%	1.8%	91.2%	81.4%	9.7%
Cold water tap in the house (connected to a centralized drinking water supply system)	100.0%	5.5%	23.4%	10.3%	13.1%	71.0%	64.8%	6.2%
Hot tap water	100.0%	16.9%	46.4%	19.7%	26.7%	36.6%	33.0%	3.7%
Natural gas	100.0%	27.2%	35.8%	11.3%	24.5%	37.0%	29.7%	7.3%
Heating (centralized)	100.0%	19.7%	45.0%	19.9%	25.1%	35.3%	31.8%	3.5%
Local individual heating system	100.0%	19.8%	45.1%	18.3%	26.7%	35.2%	31.6%	3.5%
Gas heater, manufactured	100.0%	20.6%	40.9%	14.2%	26.8%	38.4%	34.3%	4.1%
Telephone	100.0%	6.1%	42.1%	29.0%	13.1%	51.8%	46.0%	5.8%
Satellite	100.0%	19.5%	45.8%	19.8%	25.9%	34.7%	31.5%	3.2%
Air conditioner	100.0%	19.5%	45.7%	19.8%	25.9%	34.8%	31.4%	3.5%

## Section E. Family Benefit System

Table 58: Collection of necessary documentation for the Family Benefit System

	Total	Yerevan	Other cities and towns	Large cities	Small and medium towns	Villages	Large and medium villages	Small villages
1 Easy	71.3%	61.0%	72.0%	68.2%	76.7%	95.2%	69.9%	78.5%
2 Difficult	28.7%	39.0%	28.0%	31.8%	23.3%	4.8%	30.1%	21.5%
<b>TOTAL</b>	<b>100.0%</b>	<b>100.0%</b>	<b>100.0%</b>	<b>100.0%</b>	<b>100.0%</b>	<b>100.0%</b>	<b>100.0%</b>	<b>100.0%</b>

Table 59: Evaluation of the Social inspectors' performance

	Total	Yerevan	Other cities and towns	Large cities	Small and medium towns	Villages	Large and medium villages	Small villages
1 Satisfactory	76.8%	71.8%	74.9%	68.0%	80.5%	81.9%	82.0%	81.0%
2 Not satisfactory	9.2%	15.4%	9.7%	14.4%	5.8%	5.4%	4.5%	14.3%
3 Difficult to answer	13.9%	12.8%	15.4%	17.6%	13.6%	12.7%	13.5%	4.8%
<b>TOTAL</b>	<b>100.0%</b>	<b>100.0%</b>	<b>100.0%</b>	<b>100.0%</b>	<b>100.0%</b>	<b>100.0%</b>	<b>100.0%</b>	<b>100.0%</b>

Table 60: Assessment of system fairness

	Total	Yerevan	Other cities and towns	Large cities	Small and medium towns	Villages	Large and medium villages	Small villages
1 Fair	51.1%	51.5%	45.7%	28.5%	59.0%	57.9%	56.2%	73.9%
2 Unfair	18.8%	14.7%	26.7%	43.1%	14.0%	10.8%	11.1%	8.7%
3 Difficult to answer	30.1%	33.8%	27.6%	28.5%	27.0%	31.3%	32.7%	17.4%
<b>TOTAL</b>	<b>100.0%</b>	<b>100.0%</b>	<b>100.0%</b>	<b>100.0%</b>	<b>100.0%</b>	<b>100.0%</b>	<b>100.0%</b>	<b>100.0%</b>

Table 61: Assessment of "real" poverty of beneficiaries

	Total	Yerevan	Other cities and towns	Large cities	Small and medium towns	Villages	Large and medium villages	Small villages
1 Almost all are poor	29.4%	16.9%	24.8%	13.8%	33.1%	42.6%	42.2%	45.8%
2 More than half is poor	24.7%	19.1%	30.1%	31.2%	29.3%	20.7%	19.3%	33.3%
3 Half is poor	12.8%	13.2%	14.7%	18.1%	12.2%	9.9%	9.6%	12.5%
4 Less than half is poor	6.7%	13.2%	6.3%	10.1%	3.3%	3.7%	3.7%	4.2%
5 Small portion is poor	2.6%	5.1%	2.8%	3.6%	2.2%	0.8%	0.9%	0.0%
6 Difficult to answer	23.8%	32.4%	21.3%	23.2%	19.9%	22.3%	24.3%	4.2%
<b>TOTAL</b>	<b>100.0%</b>	<b>100.0%</b>	<b>100.0%</b>	<b>100.0%</b>	<b>100.0%</b>	<b>100.0%</b>	<b>100.0%</b>	<b>100.0%</b>

## Section F. Agriculture

Table 62: Households that own land plot, orchard or and other agricultural land

	Total	Yerevan	Other cities and towns	Large cities	Small and medium towns	Villages	Large and medium villages	Small villages
Yes	28.3%	5.2%	4.4%	0.7%	7.2%	72.7%	71.6%	83.3%
No	71.7%	94.8%	95.6%	99.3%	92.8%	27.3%	28.4%	16.7%
<b>TOTAL</b>	<b>100.0%</b>	<b>100.0%</b>	<b>100.0%</b>	<b>100.0%</b>	<b>100.0%</b>	<b>100.0%</b>	<b>100.0%</b>	<b>100.0%</b>

Table 63: Households that own land plot, orchard or and other agricultural land, breakdown per Strata

	Total	Yerevan	Other cities and towns	Large cities	Small and medium towns	Villages	Large and medium villages	Small villages
Yes	100.0%	3.6%	7.1%	0.5%	6.6%	89.3%	79.2%	10.2%
No	100.0%	25.7%	61.1%	27.5%	33.7%	13.2%	12.4%	0.8%
<b>TOTAL</b>	<b>100.0%</b>	<b>19.4%</b>	<b>45.8%</b>	<b>19.8%</b>	<b>26.0%</b>	<b>34.8%</b>	<b>31.3%</b>	<b>3.4%</b>

Table 64: Types of land and other specific parameters (as determined in the scale below)

Average estimates	TOTAL	Yerevan	Large cities	Small and medium towns	Large and medium villages	Small villages
<b>Arable land</b>						
Surface area	2.1	-	-	2.4	2.1	2.2
Number of separate land lots	1.4	-	-	1.3	1.5	1.5
Irrigated area, share	3.0	-	-	2.7	3.1	2.6
<b>Orchard</b>						
Surface area	1.6	1.3	-	1.6	1.7	1.2
Number of separate land lots	1.2	1.2	-	1.2	1.2	1.0
Irrigated area, share	3.5	3.8	-	4.0	3.5	3.1
<b>Pastures</b>						
Surface area	3.0	-	-	-	2.7	4.0
Number of separate land lots	1.6	-	-	-	1.3	2.5
Irrigated area, share	1.7	-	-	-	1.3	2.5
<b>Hayfields</b>						
Surface area	2.3	-	-	3.0	2.3	2.3
Number of separate land lots	1.5	-	-	1.0	1.5	1.8
Irrigated area, share	1.1	-	-	1.0	1.0	1.5
<b>Evaluation scale</b>						
<b>Surface area</b>	<b>Surface area</b>		<b>Surface area</b>		<b>Surface area</b>	
1. less than 0.2 ha	1. less than 0.2 ha		1. less than 0.2 ha		1. less than 0.2 ha	
2. 0.2 - 0.5 ha	2. 0.2 - 0.5 ha		2. 0.2 - 0.5 ha		2. 0.2 - 0.5 ha	
3. 0.5 - 1.0 ha	3. 0.5 - 1.0 ha		3. 0.5 - 1.0 ha		3. 0.5 - 1.0 ha	
4. 1 - 2 ha	4. 1 - 2 ha		4. 1 - 2 ha		4. 1 - 2 ha	
5. more than 2 ha	5. more than 2 ha		5. more than 2 ha		5. more than 2 ha	

Table 65: Use of land lots

	Total	Yerevan	Other cities and towns	Large cities	Small and medium towns	Villages	Large and medium villages	Small villages
Use entirely	58.2%	57.1%	50.0%	-	50.0%	58.9%	58.1%	65.0%
Use partially	21.1%	42.9%	8.3%	-	8.3%	21.1%	23.2%	5.0%
Do not use	20.6%	0.0%	41.7%	-	41.7%	20.0%	18.7%	30.0%
<b>TOTAL</b>	<b>100.0%</b>	<b>100.0%</b>	<b>100.0%</b>	<b>-</b>	<b>100.0%</b>	<b>100.0%</b>	<b>100.0%</b>	<b>100.0%</b>

**Table 66: Main reasons for not using land**

Reasons	Total	Yerevan	Other cities and towns	Large cities	Small and medium towns	Villages	Large and medium villages	Small villages
No financial resources	32.5%	-	40.0%	-	40.0%	31.4%	34.5%	16.7%
No quality seeds	2.5%	-	0.0%	-	0.0%	2.9%	0.0%	16.7%
Not capable physically	37.5%	-	0.0%	-	0.0%	42.9%	37.9%	66.7%
Too far from the community	5.0%	-	20.0%	-	20.0%	2.9%	3.4%	0.0%
Low quality soil	12.5%	-	20.0%	-	20.0%	11.4%	13.8%	0.0%
No time	0.0%	-	0.0%	-	0.0%	0.0%	0.0%	0.0%
Other	10.0%	-	20.0%	-	20.0%	8.6%	10.3%	0.0%
<b>TOTAL</b>	<b>100.0%</b>	<b>0.0%</b>	<b>100.0%</b>	<b>0.0%</b>	<b>100.0%</b>	<b>100.0%</b>	<b>100.0%</b>	<b>100.0%</b>

**Table 67: Possession of livestock in rural areas**

	Villages	Large and medium villages	Small villages
Yes	46.1%	44.7%	58.3%
No	53.9%	55.3%	41.7%
<b>TOTAL</b>	<b>100.0%</b>	<b>100.0%</b>	<b>100.0%</b>

**Table 68: Main types of livestock in rural areas**

	Villages	Large and medium villages	Small villages
Cattle (cows, horses, donkeys, etc)	66.1%	63.3%	85.7%
Sheep and goats	13.4%	8.2%	50.0%
Pigs	22.3%	17.3%	57.1%
Chicken, turkey, etc	67.9%	68.4%	64.3%
Bees	3.6%	0.0%	28.6%